

 25 Years of Inspiring Philanthropy
community foundation
of anne arundel county

INSPIRED



TABLE OF CONTENTS

CFAAC 25-Year Timeline.....2

Message from CFAAC Leadership.....4

2023 Board of Trustees.....5

Cumulative Giving.....6

2023 CFAAC Staff.....7

Announcing: Always Anne Arundel.....8

2022 Year in Review.....10

Community Needs Assessment Report.....11

Connection. It’s a Word that has Great Meaning to the Burrows.....12

2022 Grants & Scholarships Program Volunteers.....13

2022 Board Committee Volunteers.....13

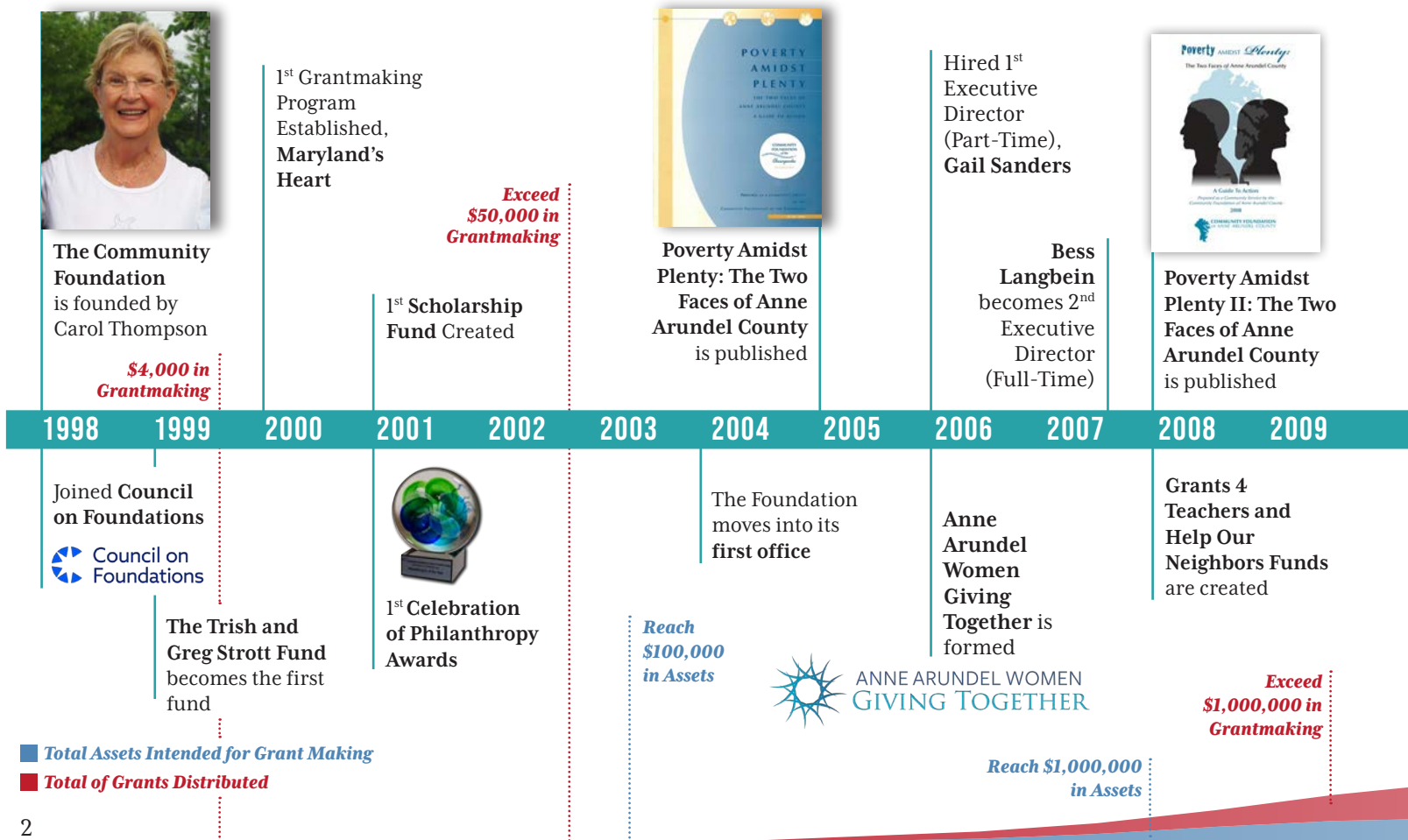
CFAAC Scholarship Recipients.....13

CFAAC Funds.....14

Donor Advised Funds: A Smart Way to Give.....18

Commitment. Michael’s and Cherie’s Gifts of Love and Legacy.....19

CFAAC 25-YEAR TIMELINE



Community Leadership Circle.....20

Fund for Anne Arundel.....22

Gratitude. It's What Keeps David Irving Going Every Day. Well, that and Math.....23

Celebration of Philanthropy.....24

Professional Advisor Recognition Society.....27

Insight. A Trip and a Baby Sea Lion Changed Andrea Beegle's Life Perspective.....28

Financial Summary.....29

Gifts Made in Honor or Memory.....30

Discretionary Fund Grant Programs.....32

2022 CFAAC Grantees.....34

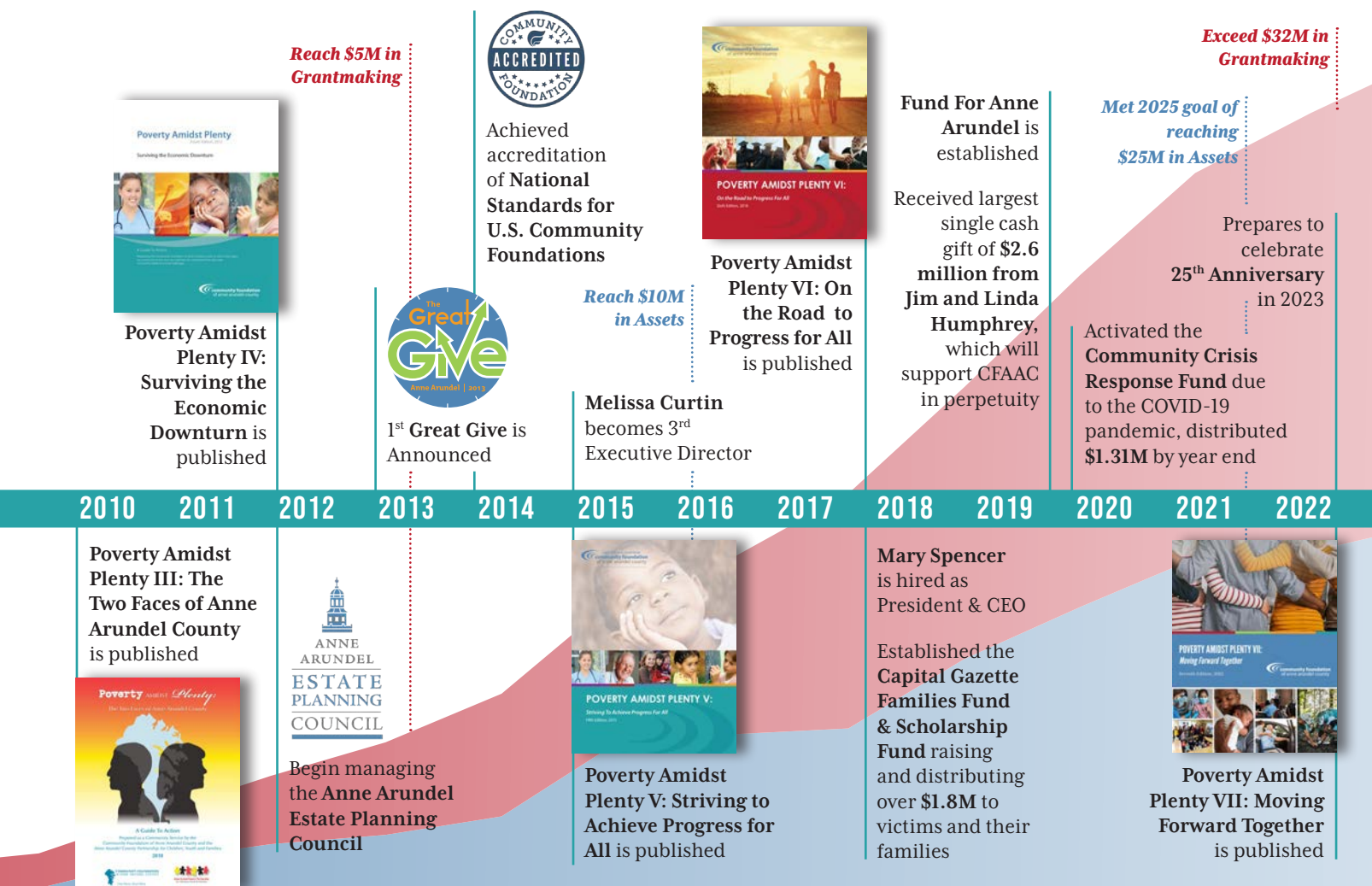
How to Partner with CFAAC to Support Your Philanthropy.....36

Inclusion. Tough Times During the Pandemic Helped OBI Reevaluate and Expand
Their Reach.....37

Speaker Series Events.....38

Anne Arundel Estate Planning Council.....40

Ways to Give.....42



MESSAGE FROM CFAAC LEADERSHIP



Jim Humphrey
CFAAC Board Chair

When we work together, we are able to make a tremendous impact in our community. The part the Community Foundation plays in helping to build better futures for our community members and our dedicated nonprofits is a source of pride and purpose for all of us. However, we could not do it without you. Thanks to you, in 2022, CFAAC ended the year with more than \$26 million in assets intended for grantmaking. We distributed 487 grants, including 10 scholarships, to more than 260 different organizations, totaling nearly \$4 million in funding. In addition, we established 12 new funds and 7 Legacy Fund commitments.

Throughout the year, donors continued to turn to the Community Foundation when incorporating their philanthropic goals into their estate plans. We now have confirmed more than \$75 million in assets that will come through future CFAAC Legacy Funds to support the important work of nonprofits.

This past year, CFAAC saw new milestones and changes, too. We reinforced our staff by adding a new Director of Development, Damika Baker-Wilson, in February 2022. And this year, we welcomed our new Director of Planned Giving, John Rodenhausen, a seasoned professional who is joining our team after 25 years at the Chesapeake Bay Foundation. We also welcomed back Kristen Krall, our former Grants and Scholarships Manager, who rejoined us on a part-time basis as our new Community Education Coordinator.



Mary Spencer
CFAAC President & CEO

The Community Foundation welcomed four new Board of Trustee members—Daniel “Dan” Mathias, P.E.; Edward “Ed” Evans; Kate Belden Schoff; and Naeemah Staggs—we are excited and know that they bring with them enthusiasm and a diverse breadth of expertise. Saying goodbye to five dedicated retiring board members—Mary Grace Folwell, Carl Gutschick, John Magnolia, David Mitchell, and Paul Serini—is never easy. They remain an important part of CFAAC’s story and we are so grateful for their generous support, knowledge, and all that they’ve done for CFAAC.

CFAAC published the 2022 Community Needs Assessment Report: *Poverty Amidst Plenty VII: Moving Forward Together*, working with Dr. Pamela Brown, Executive Director of Anne Arundel County Partnership for Children, Youth, and Families. This report is paramount to understanding the issues and needs in the county that impact our economy and quality of life. To underline its importance and generate awareness, we invited the public to attend three needs assessment report presentations given by Dr. Brown, held at venues across the county. This year, Dr. Brown continues to hold talks online and county-wide. You can access the report on CFAAC’s website.

Throughout the year, we offered the community a wide range of webinars and in-person programs—19 in all! This included our annual Celebration of Philanthropy where we not only honored eight deserving community leaders, but also introduced our Professional Advisor Recognition Society, naming six inductees to its inaugural class. All the honorees represent our community on many levels—they are the people who drive transformational change in our county, serve as generous contributors who often work behind the scenes, and look beyond themselves to help make Anne Arundel County better for all.

This year, 2023, marks our 25th anniversary. To commemorate this anniversary, in 2022, we developed an ambitious, board-directed goal of achieving \$35 million in assets by 2025 that is aligned with our Strategic Plan. To achieve this goal, the CFAAC staff and board created a four-year, fundraising action plan, *Always Anne Arundel: Road Map to \$35 Million in Assets by 2025*. We continue to work toward these actionable goals in 2023. By leveraging our strengths—a dedicated board and staff, expert knowledge of our nonprofit and community needs, and generous donors—we are positioning ourselves to achieve great things and to navigate whatever the future brings.

As CFAAC celebrates throughout this 25th year, we are excited for the promising future that we all share, building upon CFAAC’s strong foundation to expand our impact, increase our reach, and make Anne Arundel County a great place to live, work, and play for all. Thank you for taking this journey with us.

Mary Spencer
CFAAC President & CEO

Jim Humphrey
2022-2023 CFAAC Board Chair

2023 BOARD OF TRUSTEES



Jim Humphrey, Chair
Chairman & CEO
The Humphrey Companies



Larry Clark, Vice Chair
Community Volunteer



Amy B. Tate, Secretary
Assistant General Counsel
Tate Automotive Companies



Katharine H. Caldwell, Asst. Secretary
Community Volunteer



Karen M. Whaley, Treasurer
Karen M. Whaley, CPA



Andrea Beegle, CFP®
Wealth Advisor
Compass Wealth Strategies, LLC



Dr. Coryse Brathwaite
Medical Director of Perinatal Operations
Anne Arundel Medical Center, Luminis Health



Lawrence B. Burrows
Independent Director and
Chair of the Audit Committee
TriPointe Homes



Edward Evans
Director of DEI
Cordish Gaming Group



Anne Hamel
Community Trainer
Mental Health Association of Maryland



David Irving
Founder
CollegeReadyMath



Michael Lehr, Esq.
Principal
Sims & Campbell Estates and Trusts



Dan Mathias
Co-Founder & President
Absolute Fire Protection, Inc.



Vincent Moulden
Director Community Engagement
Constituent Services
Anne Arundel County Executive's Office



Jennifer A. Pratt
Vice-President
Atapco Financial Services, Inc.



John A. Rosso, Jr.
Principal
Rosso Commercial Real Estate Services, LLC



Kate Belden Schoff
Senior Financial Advisor,
Managing Director - Investments
Wells Fargo Advisors



Naeemah Staggs
Senior Training Specialist
School of Social Work, University of Maryland



Martha Van Woerkom
Community Volunteer



Neil J. Weissman, MD, FACC, FASE
Chief Scientific Officer
MedStar Health

TRUSTEE EMERITI: Becki Kurdle, Community Volunteer | Greg Strott, Community Volunteer


CUMULATIVE GIVING

The Community Foundation of Anne Arundel County is very proud to have donors who support a variety of CFAAC priorities including the Community Leadership Fund, which strengthens our operational budget, and sponsorship in support of our Annual Celebration of Philanthropy Awards. This list includes cumulative gifts of \$1,000 or more made in 2022 to support CFAAC's operations as well as CFAAC funds that aid the organization's strategic grantmaking including: Arts and Culture Anne Arundel Fund, Community Crisis Response Fund, Environment Anne Arundel Fund, Fund for Anne Arundel, Grants 4 Teachers, Help Our Neighbors Fund, Strengthening Nonprofits Fund, and Women and Girls Fund. For the privacy of our donors, CFAAC does not list giving information about gifts made to individual funds.

\$500,000+

Larry Clark 
Deerbrook Charitable Trust

\$25,000 - \$49,999

Andrew and Leslie Price
Jim  and Linda Humphrey
Jim and Linda Humphrey Foundation
ImpactAssets
Cindy and Tim O'Neill
William J. & Dorothy K. O'Neill
Foundation
Wells Fargo Advisors



\$10,000 - \$24,999

James and Niecy Chambers
Chaney Enterprises Bull Roast Fund
Madelyn Schaefer
Schaefer Family Fund


\$7,500 - \$9,999

Tara Balfe Clifford
Dr. Coryse Brathwaite  and
Dr. Edward Zebovitz, D.D.S.
Schwab Charitable
Carol Bolton Sisco

\$5,000 - \$7,499

Kathy and Chauncey Brooks III
Larry Burrows  and Dawne
Widener-Burrows
Larry and Dawne Burrows Fund
Rosalind  and Paul Calvin
Jane Campbell-Chambliss and
Peter Chambliss
Campbell Property Management
Ralph and Carlotta Crosby
Raymond and Barbara Crosby
Crosby Foundation
James and Sylvia Earl
The Helena Foundation





\$5,000 - \$7,499, CONTINUED

Barry Gossett
Barry and Mary Gossett
Foundation Fund
Carl  and Anita Gutschick
Gutschick Family Foundation
Sabra Ladd
Luminis Health Anne Arundel
Medical Center
Beverly and Stephen Marcus
Beverly and Stephen Marcus
Foundation
OBXtek, Inc.
Bruce Potter
Kincey and Bruce Potter
Environmental Fund
The Honorable Beverly Sherman Nash
Vanguard Charitable
Greg and Susan Walker
Greg and Susan Walker
Family Foundation



\$2,500 - \$4,999

Anonymous
Benevity Community Impact Fund
Brown Advisory
Patty Brown and Joe Gill
Patty Brown and Joe Gill Giving Fund
Katharine H.  and Harry Caldwell
Fidelity Charitable Gift Fund
Mary Grace Folwell  and Jeff Riedle
Edward G. Freitag and Martha Haley
Family Foundation
Warren and Anne Hamel 
Hamel Family Fund
Daniel  and Tanya Mathias
Mathias Family Foundation
David  and Kim Mitchell
Morgan Stanley
Jennifer Pratt 
Raymond James Charitable

\$2,500 - \$4,999, CONTINUED

John  and Priscilla Rosso
Amy Beth Tate 
Bill Thompson
United Way of Central Maryland
Martha Van Woerkom 
Karen M. Whaley 
Robert and Ann Whitcomb
Erin and Jonathan Williams
Williams Family Fund

\$1,000 - \$2,499

Steven Ames
Anne Arundel Community College
Foundation
Patricia P. Baum
Andrea  and Chris Beegle
Beegle Family Fund
Beer Family Fund
Bud Billups
Boatyard Bar & Grill
Ken Code and Cathy Dea Code
Dea Code Family Foundation
Council Baradel
Ronald E. Council
Council Family Foundation
Carol and David Cronin
John and Jill DePaola
Bo DePaola Family Foundation Fund,
Bo's Effort
Frederick Galloway
Collot Guerard
David Hankey
David and Jan Hoffberger
Tom and Prue Hoppin
David  and Tove Irving
Ron and Nan Jarashow
Jon and Kathy Korin
Katie Leavy
Michael  and M. Katherine Lehr

\$1,000 - \$2,499, CONTINUED

Richard Lerner
Arthur Little and Barbara Tymkiw
Mason Investment Services
Jim and Nancy Nolan
Joyce Olin and Christopher Nelson
Optum Health
Mike and Sue Pitchford
Colleen and Lester Prosser
Colleen Prosser Living Trust
Shore United Bank
John B. and Mary E. Slidell
Mary 🧑 and Dale Spencer
Mary and Dale Spencer Charitable Fund
Raymond Streib
Trish and Greg 🧑 Strott
Trish and Greg Strott Fund
Peter and Daphne Summers
Sunshine Fund
TIAA
The U.S. Charitable Trust
Dr. Neil Weissman 🧑
Joseph Workman

2022 or 2023 CFAAC Board Member 🧑

2022 or 2023 CFAAC Staff Member 🧑

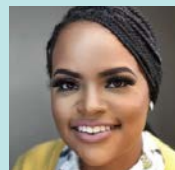
2023 CFAAC STAFF



Mary Spencer
President and CEO



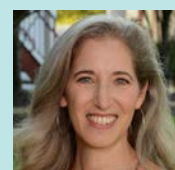
Kathy Luthcke, CPA, CGMA
Director of Finance & Operations



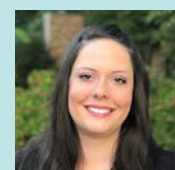
Damika Baker-Wilson, CFRE
Director of Development



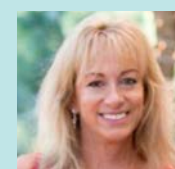
John Rodenhausen
Director of Gift Planning



Rosalind Calvin
Grants & Scholarships Manager



Ashley Robison St. Clair
Marketing & Communications Coordinator



Renee Houston Zemanski
Communications Specialist



Kelli Williams
Philanthropic Services Coordinator



Kristen Krall
Community Education Coordinator

ANNOUNCING: ALWAYS ANNE ARUNDEL

Community foundations like the Community Foundation of Anne Arundel County, are available for local emergencies, can discover pockets of need within a community, provide high-quality philanthropic services to donors, offer expertise based on their deep understanding of local needs, and organize informative programs to strengthen nonprofits and educate the community. CFAAC is uniquely positioned to connect philanthropic dollars with local nonprofits that are working directly with communities and residents in need.

In 2022, members of the CFAAC staff and Fund Development Committee, carefully worked with CFAAC's Strategic Plan to draft a Road Map to \$35M in assets by 2025. As a result, a detailed, four-year, fundraising plan was outlined. The plan includes increasing: Immediate Impact Funding, Endowment for CFAAC, Assets for Discretionary Grantmaking Funds, and Endowment Commitments.



WHY NOW?

In every great community, there are times when vision, leadership, and generosity come together to transform the future. This is Anne Arundel County's time. And CFAAC is leading the way.

CFAAC celebrates its 25th anniversary in 2023. This is CFAAC's defining moment; it is the time for us to not only look back at our achievements, but also move forward to new levels of success.

How can you help?

- Open a Donor Advised or Corporate Advised Fund.
- Continue to grow your existing Donor Advised Fund or Corporate Advised Fund by adding gifts that can be put to work immediately.
- Support CFAAC's future by contributing to our Endowment.
- Leave a legacy by creating an Endowed Fund for causes that you care about or by making a planned gift to CFAAC.
- Pool your resources together with other donors by giving to one of CFAAC's Discretionary Funds.
- Add new intentions to your existing Donor Advised Fund to convert it during your lifetime to an Endowed Fund.

ROAD MAP TO \$35M IN ASSETS BY 2025

**INCREASE
IMMEDIATE IMPACT
FUNDING
\$15M - \$20M**

**INCREASE
ENDOWMENT
FOR CFAAC
\$1M - \$2.5M**

**INCREASE ASSETS FOR
DISCRETIONARY
GRANTMAKING FUNDS
\$2M - \$5M**

**INCREASE
ENDOWMENT
COMMITMENTS
\$1M - \$2.5M**

Road Map Goals include outright and planned gift pledges

Always Anne Arundel

ALWAYS GROWING BY...

- Opening 125 new funds including new legacy commitments
- Leveraging partnership with Anne Arundel Estate Planning Council
 - Launched the Professional Advisor Recognition Society in 2022
- Strengthening our Charitable Partners Program



ALWAYS IMPACTFUL BY...

- Grounding our community impact work in the 2022 Community Needs Assessment findings
- Increasing accessibility to all CFAAC events, programs, and resources
- Aligning our speaker series programs with community needs



ALWAYS SUPPORTING BY...

- Exploring new or revised Fields of Interest Funds to align with our 2022 Community Needs Assessment
- Continuing the grantmaking cycle for the Fund for Anne Arundel to strengthen and encourage innovative partnerships between large and small organizations through:
 - Partnership and capacity building
 - Mentoring for smaller organizations to grow capacity
 - Lifting up nonprofits in our community



ALWAYS SHARING BY...

- Honoring CFAAC's history within the context of the larger world
- Communicating forward-thinking messages focused on future aspirations



ALWAYS CELEBRATING BY...

- Visualizing CFAAC's reality at its 50th anniversary
- Celebrating in the community through:
 - Celebration of Philanthropy Awards
 - Educational Programming and Events
 - Community Awareness Events
 - Legacy Fundholder Events Gatherings
 - Planned Giving Informational Events
 - Leadership Donor Celebrations



ALWAYS LEADING BY...

- Promoting CFAAC, our events, and initiatives
- Continuing to generate awareness of CFAAC to the community
- Remaining the board of choice, recruiting new board members to steward CFAAC's future



2022 YEAR IN REVIEW



Grew to **\$26.8 Million** in *Total Assets under management* intended for grantmaking



Hosted the **22nd Annual Celebration of Philanthropy Awards Luncheon**



Maintained Accreditation through *The National Standards for U.S. Community Foundations*, which ensures organizational accountability and commitment to legal compliance, philanthropic best practices, and operational excellence.



Supported 8 *Anne Arundel Estate Planning Council* Events



Hosted 15 *Community Impact Speaker Series* events



Published *Poverty Amidst Plenty VII: Moving Forward Together*, community needs assessment report



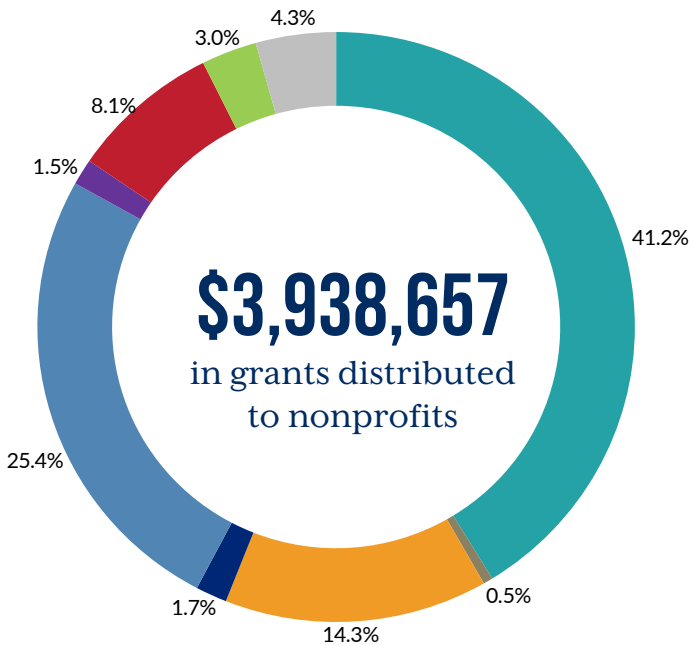
Opened **12 New Donor Advised, Corporate Advised, Agency, and Legacy Funds**



Provided **\$8,625 Endow Maryland Tax Credits** creating \$34,500 in new endowed assets through the program



2022 Total Endowed Assets under management: **\$6,942,173**



487 GRANTS AWARDED IN 2022

FUNDS & SCHOLARSHIPS

- 365 Donor Advised Fund Grants, \$3,127,273
- 15 Designated & Program Grants, \$36,685
- 10 Scholarships, \$64,500
- 7 Nonprofit Agency Fund Grants, \$23,355

OTHER GRANTS

- 11 Anne Arundel Women Giving Together Grants, \$159,265
- 11 Anne Arundel County Fund Grants, \$68,772
- 33 Field of Interest Fund Grants, \$184,000

DISCRETIONARY GRANTS

- 18 Community Crisis Response Fund Grants, \$87,541
- 10 Grants 4 Teachers Grants, \$4,951
- 7 Fund for Anne Arundel Grants, \$182,315

GRANTS BY INTEREST TYPE

Education	\$ 1,624,608	Arts & Culture	\$ 66,925	Capacity Building	\$ 320,450
Other	\$ 20,500	Human Services	\$ 999,442	Environment	\$ 118,317
Health & Wellness	\$ 561,315	Scholarship	\$ 56,100	Faith-Based	\$ 171,000

2022 COMMUNITY NEEDS ASSESSMENT REPORT

POVERTY AMIDST PLENTY VII: MOVING FORWARD TOGETHER

“The needs assessment is important because in so many ways it serves as the preamble for a playbook: A playbook for creating positive change in our community. If we can see the issues, we can find the solutions.”

—CFAAC Board Member and Fundholder **Andrea Beegle**

The Community Association of Anne Arundel County strives to help make Anne Arundel County a wonderful place to live for all. We know that the love of our beautiful county is shared by many but also realize there are pockets of need throughout. Therefore, every three years, CFAAC publishes a needs assessment report that examines the gap that exists between the current state of our county and the desired state of our county. The needs assessment is a data-rich report intended to increase knowledge and awareness about persistent local trends and needs in Anne Arundel County.

In the fall of 2022, the report’s author, Pamela Brown, Ph.D., the Executive Director of the Anne Arundel County Partnership for Children, Youth and Families, hosted needs assessment presentations around the county including three public sessions at Maryland Hall for the Creative Arts, the Chesapeake Arts Center, and Anne Arundel Community College. The presentations were well attended and Pamela continues to host additional talks, as needed.

The 2022 Anne Arundel County Community Needs Assessment, *Poverty Amidst Plenty VII*, contains collective quantitative and qualitative data from a variety of local, state and national sources, focus groups, and more. The focus groups were comprised of diverse voices throughout the county including residents, advocates, and health care personnel and providers, representing a total of 168 participants. Their comments are threaded throughout the report. The data was reviewed until dominant themes emerged, which became the subtext of the report.

By tracking the key measures of community well-being, CFAAC can identify priority needs and possibly identify root causes that contribute to those needs. Then nonprofits, community advocates, individual philanthropists, volunteers, business leaders, elected officials, policy makers, government agencies, foundations, professional advisors, and the general population can use this report to develop and prioritize strategies and implement plans. It allows us to work together and develop a common vision for Anne Arundel County—a vision that can be the catalyst in the formula to determine real community solutions. To support these efforts, CFAAC plays an important role by building permanent philanthropic assets that are necessary to sustain our local nonprofits and the wonderful work they do.



Mary Grace Folwell, Anne Hamel, Martha Van Woerkom, Amy Tate, and Mary Spencer at the Anne Arundel Community College presentation.



Amy Tate, Kate Caldwell, Martha Van Woerkom, Andrea Beegle, Mary Spencer, Dr. Brown, and Larry Burrows at the Maryland Hall presentation.



Larry Clark, Kathy Luthcke, Rosemary Calderalo, Damika Baker-Wilson, and Rosalind Calvin at the Chesapeake Arts Center presentation.



Dr. Pamela Brown presenting at Maryland Hall.



SCAN OR VISIT
www.cfaac.org/needs-assessment.html
 TO DOWNLOAD A COPY

CONNECTION. IT'S A WORD THAT HAS GREAT MEANING TO THE BURROWS.

"We have strong bonds with our families and we remain connected to them," said Dawne. "We also enjoy being connected to our respective colleges by funding scholarships, and now are pleased to be more connected with our local community through CFAAC."

Larry added, "We've been involved in philanthropy for a while, but when the pandemic hit, we wanted to be more intentional in our local giving efforts."

Fortuitously, they ran into an acquaintance who told them about the Community Foundation; they both wanted to become involved. They dove right in: Larry became a CFAAC Board member. Dawne joined CFAAC's giving circle, Anne Arundel Women Giving Together.

"We wanted to be more engaged locally and we had confidence that CFAAC could help us make better connections," said Larry, who with Dawne opened a Donor Advised Fund at CFAAC in 2022. After opening the fund, the Burrows sat down with CFAAC staff and talked about their interests. They had researched local charities, but were pleased when they discovered even more nonprofits that could use their help through their conversations with the Community Foundation staff, who have a deep understanding of local nonprofits.

"We have great confidence and trust in these nonprofits because we know that CFAAC has vetted them, and because of that, have confidence that the organizations are making an important impact in our community," said Larry.

"GIVING GENERATES BOTH LIGHT AND HOPE." —LARRY

Larry and Dawne take full advantage of giving through time and funds. Having been retired for over 10 years— Larry from an executive position with Weyerhaeuser, and Dawne, who founded and ran her own marketing research firm—they are not only involved with CFAAC, but also with other organizations. Larry serves as a board member with TRI Pointe Homes, Inc., and served on the Chesapeake Multicultural Resource Center board for more than 10 years. Dawne has served as a board member of the Spina Bifida Association for the past two years, and previously on the Annapolis Symphony Orchestra board. Both also currently serve on their respective college advisory boards; Larry with Rutgers and Dawne with the

University of Florida. In terms of contributing, Larry often remembers what his mentor told him long ago: "He said, 'do well and do good.' That still resonates with me."

"WITH THE COMMUNITY FOUNDATION IT'S ABOUT RELATIONSHIP PHILANTHROPY RATHER THAN TRANSACTIONAL PHILANTHROPY; WITH CFAAC YOU ALSO GET ENGAGEMENT." —LARRY

Dawne agreed, "Everyone at CFAAC has been super supportive, very responsive, and extremely helpful. The Community Foundation is a great resource and once you open your fund, you should take advantage of all of the services offered to you; that's been really helpful to us. And the programs they sponsor—helping to support leadership and nonprofits—are outstanding."

Larry added, "The Community Foundation makes your decision-making easier. They have a great understanding of the community's needs if you are looking to make an impact locally."



2022 GRANTS & SCHOLARSHIPS PROGRAM VOLUNTEERS

Patti Baum
 Andrea Beegle
 Kathy Brooks
 Patty Brown
 Larry Burrows
 Larry Clark
 Jenny Davis Forrest
 Ed Evans
 Marguerite Gibbons
 Anne Hamel
 Jan Hoffberger
 David Irving
 Mike Lehr
 John Magnolia
 Vincent Moulden
 Cindy O'Neill

Lisa Pellicani
 Paul Pellicani
 Renee Plumb
 Bruce Potter
 Laura Marie Robinson
 Kate Schoff
 Abby Sprinkel
 Naemah Staggs
 Michelle Szczepaniak
 Amy Tate
 Nancy Turner
 Phil Turner
 Martha Van Woerkom
 Neil Weissman
 Karen Whaley
 Crystal Williams
 Chuck Yocum



2022 CFAAC SCHOLARSHIP RECIPIENTS

LCPL. ERIC HERZBERG, USMC AND LCPL. WILLIAM TAYLOR WILD, IV, USMC SCHOLARSHIP FUND

The following recipients each received \$10,000 scholarships:

Arusa Malik, South River High School, plans to study political science and international diplomacy at John Hopkins University.

Lucy Nathan, Broadneck High School, plans to study occupational therapy at Misericordia University.

In 2022, thanks to a generous contribution from an anonymous donor, the fund was able to award two additional \$5,000 scholarships to the following students:

Adah Harding, Arundel High School, plans to study biomedical engineering at the University of Maryland Baltimore College.

Simon Sulonen, Northeast High School, plans to study physics at The Citadel.

THE OFFICER GRANT TURNER MEMORIAL SCHOLARSHIP FUND

Each recipient received a \$1,700 scholarship:

Lauren Recktenwald, Arundel High School, plans to study sports performance: health and fitness at Webber International University.

Erin Tebbe, South River High School, plans to study kinesiology at the University of Maryland-College Park.

LEARN MORE AT: [CFAAC.ORG/SCHOLARSHIPS](https://cfaac.org/scholarships)



2022 BOARD COMMITTEE MEMBERS

EXECUTIVE COMMITTEE

Jim Humphrey, *Chair*
 Larry Clark, *Vice Chair*
 Amy Tate, *Secretary*
 Katharine H. Caldwell, *Assistant Secretary*
 Karen Whaley, *Treasurer*
 Mary Grace Folwell, *Immediate Past Chair*
 John Magnolia

ASSET MANAGEMENT

Larry Clark, *Chair*
 Martha Blaxall, *Community Volunteer*
 Stephen Holt, *Premier Planning Group*
 Jim Humphrey, *CFAAC Board Chair*
 Brad Long, *Raymond James Financial Services Advisors, Inc.*
 Greg Strott, *Trustee Emeritus*

GOVERNANCE & NOMINATING

Anne Hamel, *Chair*
 Larry Burrows
 Mike Lehr
 David Mitchell
 Vincent Moulden
 Martha Van Woerkom

BUDGET & FINANCE

Karen Whaley, *Chair*
 Carl Gutschick
 Jim Humphrey
 John Rosso
 Neil Weissman

FUND DEVELOPMENT & COMMUNICATIONS

Katharine H. Caldwell, *Chair*
 Andrea Beegle
 Coryse Brathwaite
 Kathy Brooks
 Larry Burrows
 Larry Clark
 David Irving
 John Magnolia
 Vincent Moulden
 Cindy O'Neill
 Jennifer Pratt
 Paul Serini
 Amy Tate

AUDIT COMMITTEE

David Mitchell, *Chair*
 Larry Clark
 Jim Humphrey

CFAAC FUNDS

Opening a fund at CFAAC is the first step in creating a legacy to benefit causes that matter to you. We thank you for choosing us as your philanthropic partner. As financial stewards dedicated to helping you make the most of your giving, we are honored to work with nearly 200 individuals, families, companies and nonprofits who have established funds at the Community Foundation of Anne Arundel County.

Your generosity is making a powerful impact to build up communities where everyone has an opportunity to thrive. In 2022, CFAAC welcomed the following funds; each was established to support charitable causes that align with the donor's philanthropic goals and financial strategies.

Anonymous Legacy Fund

Katherine Barnett AAWGT Lifetime Membership Fund

Lawrence Burrows and Dawne Widener-Burrows Charitable Fund

The Deerbrook Fund

MG and BR Gosnell Fund

The David and Tove Irving Family Fund

Trudy McFall Fund

OBXtek Charitable Foundation

Lily Openshaw AAWGT Lifetime Membership Fund

Betsy Brown Ruzzi Education Fund

Ellen Shiery AAWGT Lifetime Membership Fund

Trish Strott AAWGT Lifetime Membership Fund

ANNE ARUNDEL COUNTY FUNDS

Anne Arundel County agencies and departments deliver critical services that improve the quality of life for all residents. CFAAC's Anne Arundel County Funds allow donors to provide direct support to county agencies, departments, programs, and projects. These funds ensure that these important agencies and services continue to aid our community.

Anne Arundel County Animal Control

Anne Arundel County Department of Aging

Anne Arundel County Department of Health

Anne Arundel County Department of Social Services

Anne Arundel County Fire Department

Anne Arundel County General Use

Anne Arundel County Partnership for Children, Youth & Families

Anne Arundel County Police Department

Anne Arundel County Recreation & Parks Department

Anne Arundel County Sheriff's Fund

CORPORATE ADVISED FUNDS

Companies that encourage community involvement distinguish themselves from their competitors and see many benefits, including loyal customers and happy employees. Corporate Advised Funds enable companies to launch and grow a philanthropy program that aligns strategically with their financial and business goals, maximize tax benefits, and engage its employees. CFAAC works with corporations to establish Corporate Advised Funds, eliminating administrative burden so companies can focus on business while also allowing owners, managers, and employees to have a voice in philanthropic decision-making.

Baum Jackson Investment Group Charitable Foundation

Crosby Foundation

Gable Signs Foundation for a Brighter Future

Greenberg Gibbons/Reliable Contracting Foundation Fund

Howard Bank Fund

Insurance Force Foundation

Maryland Mortgage Bankers and Brokers Association (MMBBA) Fund

Maryland Realtors Charitable Fund

OBXtek Charitable Foundation

SCHOLARSHIP FUNDS

Scholarship Funds allow the donor to help deserving students pursue their academic goals. Donors, working with CFAAC, can determine scholarship requirements including field of study, need, and education level such as high school or college. Funds can be named in memory of a loved one or to honor a family member.

William Bunn Memorial Scholarship Fund*

Capital Gazette Memorial Scholarship Fund

Lance Corporal Eric Herzberg, USMC and Lance Corporal William Taylor Wild, IV, USMC Scholarship Fund

Officer Grant Turner Memorial Scholarship Fund

DESIGNATED PURPOSE FUNDS

Designated Purpose Funds allow donors to name one or more specific organizations or agencies to benefit annually from the fund. Each gift is invested for long-term growth to provide perpetual support to the organization(s). Designated Purpose Funds are good choices for donors who want to support a charity or charities for multiple years so that distributions can be spread out over time to help with the charity's planning. The fund can be named after a designated organization, in honor of a loved one, or another name that highlights the fund's purpose.

Anonymous Fund (1)	Anna E. Greenberg Leadership Fund	Sylvia Meisenberg Shakespeare Education Fund
Anne Arundel Estate Planning Council Fund (AAEPC)	Healthy Anne Arundel	Perinatal Loss Fund
Beer Family Fund	In Your Honor Fund	John Starr Memorial Musician's Fund
Babe & Dick Chaney Memorial Endowment Fund	Langbein Family Endowment Fund	Sullivan Family Charitable Fund
Davis Family Designated Fund	Marcus Endowment Fund for Arundel Lodge	The Sunshine Fund
Karen Feldman Endowment Fund for Seeds 4 Success	Sylvia Meisenberg Adult Literacy Program at Arundel House of Hope	Carol Thompson Fund
		Tommy Yeager Endowment Fund

DISCRETIONARY GRANTMAKING FUNDS

Discretionary grantmaking funds are unrestricted funds that provide great flexibility to the Community Foundation so it can respond to emerging or immediate needs of the community. The grants are made at the discretion of CFAAC and grant committees so they can use the funding to address important community concerns that may evolve over time. These funds may be used in times of crisis.

Community Crisis Response Fund	Grants 4 Teachers Fund	Strengthening Nonprofits Fund
Fund for Anne Arundel	Help Our Neighbors Fund	

FIELD OF INTEREST FUNDS

Field of Interest Funds allow donors to identify and support a broad charitable purpose or category of interest, such as the arts, education, human services, or a geographic area in the county. These funds are broad in scope yet targeted to meet the needs of the community. CFAAC's grant review committees use their expertise to identify, evaluate, and award grants to organizations whose request or proposal most closely aligns with the purpose of the fund.

Arts and Culture Anne Arundel Fund	Chaney Enterprises Bull Roast Fund	South County Fund
Babe and Dick Chaney Memorial Fund	Environment Anne Arundel	Women and Girls Fund

GIVING CIRCLE FUNDS

Giving Circles encourage members to participate in philanthropy through grantmaking, education, advocacy, and community-based activities. Anne Arundel Women Giving Together, a component fund of CFAAC, is made up of individuals who pool their donations and decide together what initiatives or causes to support. Giving Circles enable people to increase their impact, knowledge, and connectivity with the community.

Anne Arundel Women Giving Together (AAWGT) Giving Circle Grant Fund	Maryann G. Gosnell AAWGT Lifetime Membership Fund	AAWGT Lifetime Membership Fund
AAWGT Endowment Fund*	Lily Openshaw AAWGT Lifetime Membership Fund	Endowment Fund (10th Anniversary)
Katherine Barnett AAWGT Lifetime Membership Fund	Julie B. Schuelke AAWGT Lifetime Membership Fund	Tara Balfe Clifford
Helaine Frances Betnun AAWGT Lifetime Membership Fund	Ellen D. Shiery AAWGT Lifetime Member Fund	Bronwyn Belling
Lynne Davidson AAWGT Lifetime Membership Fund	Trish Strott AAWGT Lifetime Membership Fund	Martha Blaxall
Linda Eggbeer AAWGT Lifetime Membership Fund		Bev Marcus
		Angela Peterman Ponatoski
		Judy Templeton

*Includes a Legacy Gift Component

The CFAAC Funds List does not include administrative funds.

CFAAC FUNDS, CONTINUED

DONOR ADVISED FUNDS

Donor Advised Funds (DAF) provide a customized approach to philanthropic giving. With a minimum gift of \$10,000, donors can establish a fund in their name or a name that highlights the fund's purpose. Donors can contribute diverse assets including cash, appreciated stock, real estate, and/or other assets, and receive the maximum allowable tax advantages. Opening or contributing to an existing DAF allows donors to make a charitable contribution at any time and receive an immediate tax deduction.

Anonymous Fund (1)
Batzold Chien Charitable Fund
Beauty for Ashes*
Beegle Family Fund
Big J's Fund
Blaxall Fund for Economic Growth
Blessings Fund
Bradshaw Family Fund*
Brooks Family Fund
Patty Brown and Joe Gill Giving Fund*
Lawrence Burrows and Dawne
Widener-Burrows Charitable Fund
Carbaugh Family Foundation
Margaret Sander Chaires Foundation
Babe and Dick Chaney Memorial Fund
Frank and Susan Chaney Foundation
Chaney Impact Fund
L.C. Cohen Fund
Council Family Foundation
Cron dall Fund
Danny's Fund
Louis A. D'Camera Memorial Fund
Deems Digital Foundation*
The Deerbrook Fund
Bo DePaola Family Foundation Fund,
Bo's Effort
Agnes Dixon Fund
Coach John Dockstader Fund
The EWE Spirit Fund
FEDE Fund
Frank's Fund
Franyo Foundation Fund

Galen's Gift
MG and BR Gosnell Fund
Barry and Mary Gossett Foundation
Gutschick Family Foundation*
Haller Family Foundation
Hamel Family Fund
HannaPolis Fund
Jim and Linda Humphrey Foundation
Carroll H. Hynson Foundation
Invictus Fund
The David and Tove Irving Family Fund
Julia A. King & Raymond J.
Cannetti Fund
Andrew Kiracofe Memorial Fund
Kurdle Family Fund
Dr. Michael J. Kurtz Foundation
Dr. Michael J. Kurtz Legacy Fund
Dick and Sabra Ladd Charitable Fund
Neal Lehner Family Fund
Lewis Family Fund
Lowery Homes Fund
Magnolia Family Foundation
Beverly and Stephen Marcus
Foundation
Marston Family Foundation
Mathias Family Foundation
Trudy McFall Fund
Jessica and Bruce Morgenstern Local
Community Impact Fund*
Peterman Ponatoski Family Foundation
Pomfret Family Charitable Foundation
Kincey and Bruce Potter
Environmental Fund

Mark and Lynne Powell Family
Foundation
Colleen and Lester Prosser Fund
RK Family Fund
Rosso Family Fund
Betsy Brown Ruzzi Education Fund
Lester M. and Lynda B. Salamon
Charitable Fund
Schaefer Family Fund
Laurie Sharp Memorial Fund
John B. and Mary E. Slidell Family
Charitable Fund
Mary and Dale Spencer Charitable Fund
Trish and Greg Strott Fund*
Victor A. Sulin Charitable Fund
Sonja Swygert Family Fund
Creston G. and Betty Jane Tate Fund
Thornton Family Fund
Three Cones Fund
Ronald and Jeanne Uhl Family Donor
Advised Fund
Walk the Walk Community Fund
Greg & Susan Walker Family Foundation
Neil J. Weissman Fund
Williams Family Fund
The Wisteria Fund
Zoe Quinn Francis Fund

*Includes a Legacy Gift Component



From Donor Advised Funds to Field of Interest Funds and more, starting a charitable fund at CFAAC can make philanthropic giving impactful, easy, and meaningful.

To get started, contact us at 410.280.1102 or visit cfaac.org/FundTypes

NONPROFIT AGENCY ENDOWMENT FUNDS

Endowments have many benefits for both donors and charitable organizations—they can help create a lasting legacy while supporting charitable causes or community needs as well as provide an assurance that the programs or causes donors care about will be supported in perpetuity. An Agency Endowment Fund at CFAAC helps ensure donors that they are contributing to a stable, growing organization, and to a purpose that will endure forever.

Annapolis Maritime Museum
Endowment Fund

Anne Arundel Conflict Resolution
Center Endowment Fund

Anne Arundel County Public Library
Foundation Endowment Fund

Boy Scouts of Anne Arundel County
Center of Help Endowment Fund*

Charting Careers Endowment Fund

Chesapeake Bay Foundation Fund
Chrysalis House Endowment Fund

Colonial Players Roland E. Riley
Endowment for the Arts

Community Leadership Fund
for CFAAC

Londontowne Symphony Orchestra
Endowment Fund

Opportunity Builders Inc.

Partners In Care Maryland
Endowment Fund

Pregnancy Clinic Endowment Fund

Scenic Rivers Land Trust
Stewardship Reserve

Teach 4 Anne Arundel Fund

LEGACY SOCIETY

There are many ways to leave a legacy and impact future generations at the Community Foundation of Anne Arundel County. Planned gifts, when realized, can range from establishing a new fund or giving direct gifts to nonprofits to supporting CFAAC's work. CFAAC can also arrange for a charitable gift annuity to benefit loved ones, providing for their lifetime income while leaving a gift to charity after their lifetime.

CFAAC works with your professional advisors to ensure that you realize your philanthropic goals. We can answer your questions, assist you in identifying giving options, and support your goals to leave a lasting impact.

Members of CFAAC's Legacy Society understand that CFAAC is well-positioned to serve as their stewards to impact and improve our community now and in the future. Partner with the Community Foundation and discover how you can create a legacy and contribute to the vision of the world that you carry in your heart.

Anonymous Donors (7)

Cornelius G. Aben, Jr.

Steven R. Ames

Helaine Frances Betnun

Patricia Brown and Joe Gill

Katharine H. Caldwell

Jane Campbell-Chambliss and
Peter Chambliss

Mary Middleton Calhoun Carbaugh
Charitable Lead Trust

Prudence Clendenning

Linda C. Cohen

Michaele Cohen

Billie and Erma Collins

James M. and Susan D. Cox

Louis and Charlotte D'Camera

Gene Deems

Louise E. DeJesus

Jib and Katherine Edwards

Robert and Kim Elling

Brian Guarino

Carl and Anita Gutschick

Barbara Hoffstein

Marsha S. Jackson

Julia A. King and Raymond J. Cannetti

Tatiana and Richard Klein

John and Jan Magnolia

Trudy McFall

Bruce and Jessica Morgenstern

Eugene Paul Nepa Trust

Cindy and Tim O'Neill

Rita E. Ormasa

Bruce Potter

Mary S. Powell

Russell K. and Alexandra C. Robinson

Madelyn Schaefer

Patricia E. Schellman

John and Mary Slidell

Colleen Stauffer

Greg and Trish Strott

Melanie M. and Michael D. Teems

William Thompson

The Honorable Cathleen M. Vitale and
Mark Muckelbauer

Catherine Weber

Neil J. Weissman, MD

Karen M. Whaley

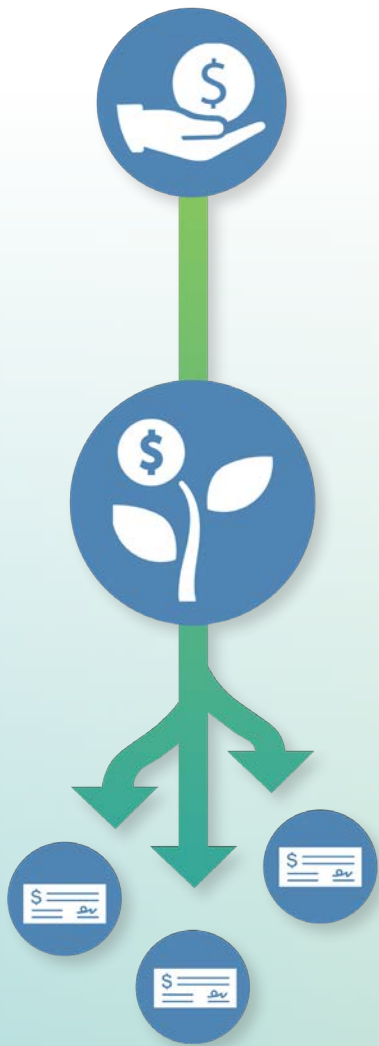
***Includes a Legacy Gift Component**

The CFAAC Funds List does not include administrative funds.

DONOR ADVISED FUNDS: A SMART WAY TO GIVE

Donor Advised Funds are one of the fastest-growing financial tools on the market – and for good reason—they help donors simplify, secure, and grow their charitable dollars. Selecting the right partner in your giving comes down to what you value the most.

Deciding to establish a Donor Advised Fund at the Community Foundation of Anne Arundel County means that you have big plans for your charitable giving and you want to make an impact.



1. GIVE

A donor makes an irrevocable contribution to a Donor Advised Fund and **will immediately receive the charitable tax benefit.**

CFAAC staff can help you support the organizations you love, now or over time.

2. GROW

The donor may advise the investment allocation of the donated assets – **any investment growth is tax-free.**

CFAAC offers a variety of expertly managed investment pools to help meet your short and long term charitable goals.

3. GRANT

The donor may **recommend grants** to qualified public charities of their choice.

CFAAC provides personalized engagement and funding opportunities including philanthropic and financial giving guidance, research, and educational events.

Grantmaking is accurate, efficient, and flexible through CFAAC's online donor portal.

HOW DO YOU KNOW IF A DONOR ADVISED FUND IS RIGHT FOR YOU?

Contact a member of CFAAC's staff team who will work with you to customize your giving options. Call us at 410-280-1102.

COMMITMENT. MICHAEL'S AND CHERIE'S GIFTS OF LOVE AND LEGACY.

The late Michael Kurtz and his late wife, Cherie Loustaunau, were partners in life and philanthropy. Michael passed away in December of 2022, just days shy of Christmas, but before he left us, he was able to share his compassionate story about Cherie.

When Michael spoke about his late wife, Cherie, tears welled up in his eyes as he shared a vivid and loving memory of her. "As she was preparing to go to the hospital for the final time, I remember her sitting at her desk writing out the last batch of checks to go out to her designated [charity] organizations. She was that dedicated," he said. "It was a painful moment but it is illustrative of who she was."

Cherie, who retired after 44 years at the U.S. Department of Commerce, made time for the causes closest to her heart, routinely donating and serving on nonprofit boards and committees. So, when Michael decided to contact the Community Foundation to open an additional legacy fund in Cherie's name, he didn't think twice. He knew exactly where her heart was during her life. "I want to keep her name alive; that's my motivation," said Michael, who set up a Donor Advised Fund and two legacy estate gifts through CFAAC, including the Cherie Loustaunau Memorial Fund for the benefit of the Anne Arundel Women Giving Together (AAWGT), an endowed fund supported through his IRA that will impact the community in perpetuity. Cherie was a life member of AAWGT.

"Cherie's whole approach to philanthropy was as it was in everything in life," said Michael. "She did her research and made her decisions. She was very disciplined about getting money to the organizations, and she stayed in contact with them."

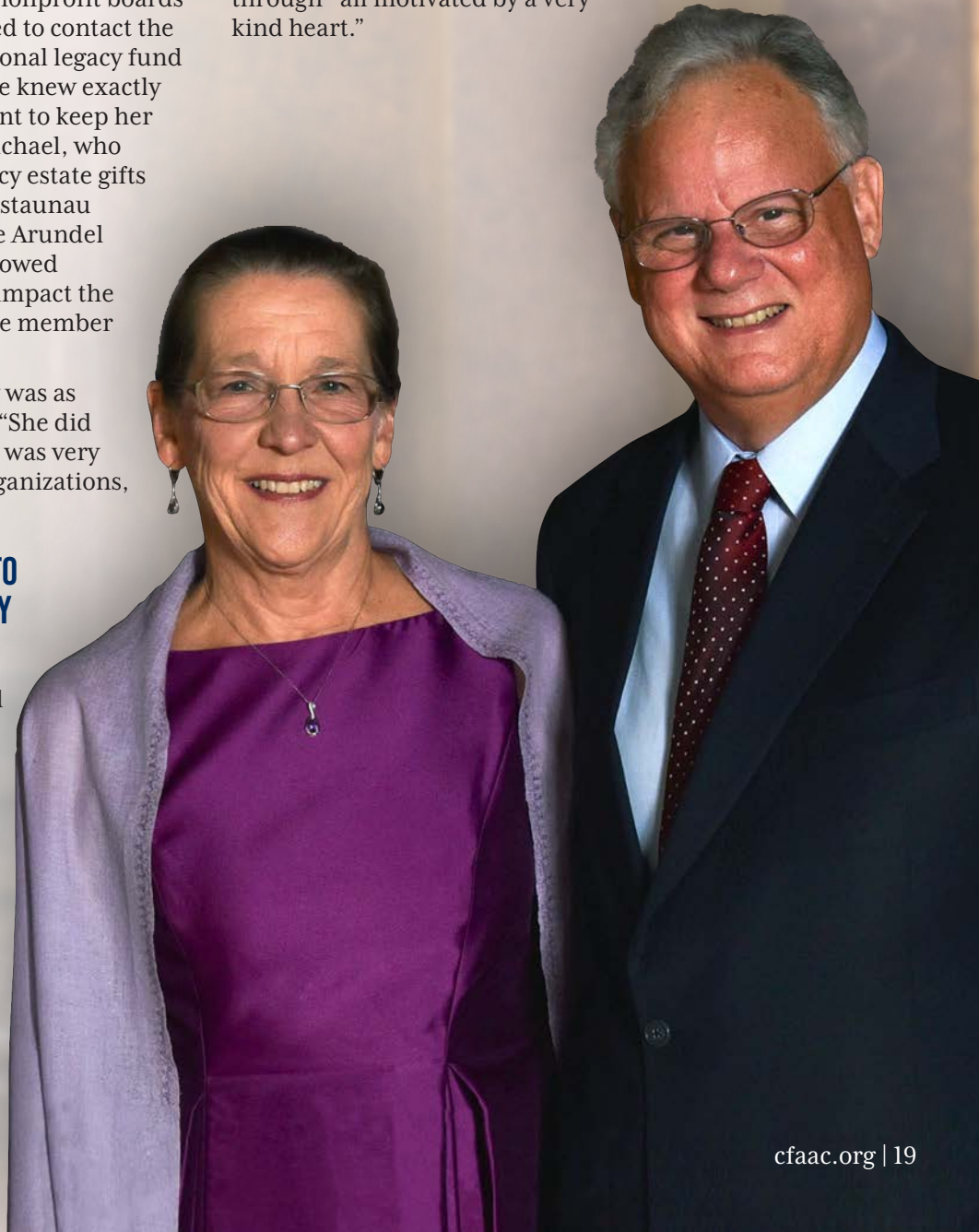
MICHAEL BELIEVED IT WAS IMPORTANT TO HAVE AN ESTATE PLAN, AND IN IT, LEGACY INTENTIONS

So, in 2018, he established the Dr. Michael J. Kurtz Fund, a Donor Advised Fund, and named a successor advisor to continue his donations after his death. Michael also thought strategically about how he could expand his charitable giving after his lifetime and donated a life insurance policy to CFAAC to fund the Dr. Michael J. Kurtz Legacy Fund, making additional annual gifts to the Community Foundation to pay the premiums on the policy. Throughout the years, Michael communicated with the CFAAC staff about the charities he wished to benefit

from the policy as his interests changed, and in 2021, updated his fund agreement to support the Wellness House of Annapolis.

"I would say that most of us do not think about our legacies and if we do, we think about what we are giving to our children and our grandchildren; often not beyond," he explained. "My feeling is that if we don't leave something to the community that we care about, then society as a whole and the society in which our children and grandchildren live in becomes poorer."

Most importantly, Michael made it clear that Cherie's legacy was more than the financial gifts she gave. "She was a woman who had a strong social conscious, a strong sense of responsibility, and the discipline and desire to follow through—all motivated by a very kind heart."



COMMUNITY LEADERSHIP CIRCLE

The Community Leadership Circle is made up of generous donors who have committed gifts to support CFAAC's operational budget to ensure long-term sustainability. These investments make a real difference as we continue to provide high-quality philanthropic services to our donors, and serve the community as a thought partner, an advocate for local nonprofits, and a catalyst for new ideas and community problem-solving.


\$35,000 TO \$50,000

Larry Clark 
ImpactAssets

\$15,000 TO \$25,000

Chaney Enterprises Bull Roast Fund
Cindy and Tim O'Neill
William J. & Dorothy K. O'Neill
Foundation

\$10,000 TO \$14,999

Niecy and James Chambers
Deerbrook Charitable Trust
Jim  and Linda Humphrey
Jim and Linda Humphrey Foundation




\$5,000 TO \$9,999

Kathy and Chauncey Brooks III
Larry  and Dawne Burrows Fund
Larry Burrows and Dawne
Widener-Burrows
Rosalind  and Paul Calvin
Jane Campbell-Chambliss and Peter
Chambliss
Campbell Property Management
Ralph and Carlotta Crosby
Ray and Barbara Crosby
Crosby Foundation
James and Sylvia Earl
The Helena Foundation
Barry Gossett
Barry and Mary Gossett
Foundation Fund
Carl  and Anita Gutschick
Gutschick Family Foundation
Sabra Ladd
Bev and Steven Marcus
Beverly and Stephen Marcus
Foundation
Bruce Potter
Kincey and Bruce Potter
Environmental Fund
Schwab Charitable
Vanguard Charitable
Greg and Susan Walker
Greg and Susan Walker Family
Foundation








\$2,500 TO \$4,999

Anonymous
Benevity Community Impact Fund
Dr. Coryse Brathwaite  and
Dr. Edward Zebovitz, D.D.S.
Patty Brown and Joe Gill
Patty Brown and Joe Gill Giving Fund
Fidelity Charitable Gift Fund
Mary Grace Folwell  and Jeff Riedle
Daniel  and Tanya Mathias
Mathias Family Foundation
Morgan Stanley
Jennifer Pratt 
Andrew and Leslie Price
Raymond James Charitable
Amy Beth Tate 
Bill Thompson
United Way of Central Maryland
Martha Van Woerkom 
Wells Fargo Advisors
Robert and Ann Whitcomb

\$1,000 TO \$2,499

Anonymous
Steven Ames
Patricia P. Baum
Andrea  and Christopher Beegle
Beegle Family Fund
Beer Family Fund
Katharine H.  and Harry Caldwell
Ron Council
Council Family Foundation
Carol and David Cronin
Frederick Galloway
Collot Guerard
Anne  and Warren Hamel
Hamel Family Fund
David Hankey
David and Jan Hoffberger
Tom and Prue Hoppin
David and Tove Irving
Ron and Nan Jarashow
Jon and Kathy Korin
Katie Leavy

\$1,000 TO \$2,499, CONTINUED

Michael  and M. Katherine Lehr
Richard Lerner
Arthur Little and Barbara Tymkiw
David  and Kim Mitchell
Jim and Nancy Nolan
Joyce Olin and Christopher Nelson
Optum Health
Mike and Sue Pitchford
John  and Priscilla Rosso
John B. and Mary E. Slidell
Mary  and Dale Spencer
Mary and Dale Spencer Charitable
Fund
Raymond Streib
Trish and Greg  Strott
Trish and Greg Strott Fund
The U.S. Charitable Trust
UBS Financial Services
Dr. Neil Weissman 
Karen Whaley 

\$500 TO \$999

Anonymous
Tara Balfe Clifford
Tillie & William Blumstein Family
Foundation
Gene Deems
Deems Digital Foundation
Thelma DeLaGrange
Steve and Carolyn Derby
Koch Family Foundation, Inc.
Becki Kurdle 
Katie McDermott
Vincent Moulden 
RBC Wealth Management
Carol Bolton Sisco
Lisa Smith
Frederick C. Sussman, Esq.
Sally Vavrek

UP TO \$499

Anonymous (12)
Marty Adelman
Anne Agee

UP TO \$499, CONTINUED

Mark Alexander
Rebecca Allyn
Randi Altschuler
AmazonSmile Foundation
John Andryszak
Glenn and Shannon Bachman
Damika Baker-Wilson 🍷
Ball Corporation
Barlow Research Associates
Sandy Bartlett
Jamie and Laura Baxter
Anthony Bent
Sigval Berg
Georgie and Ted Berkinshaw
Bowen Billups
Sharon Boettinger
Bruce and Janice Bolten
Arlene Bowes
BrandHoot, LLC
Karene Brodie
Florence Calvert
The Calvert Real Estate Group
Charles, S. & Marilyn D. Carey
Living Trust
Maria Carrasquilla
Vanessa Carter
Catalent Pharma Solutions
Betsy and Arthur Chotin
Rosemary and William Claire
Ruth Anderson Coggeshall
Jeanne Cooper
Georgianna Crosby
Danielle and Gary Cruttenden
Dorothy A. Darrah
Facebook
Richard and Carole Falk
James Fitzpatrick
Patricia Ann Frese
Paul Gabriel-Tucci and Janice
Gabriel-Tucci
Gary and Trish Gallant
Gallant Government & Law Group, LLC
Teresa Galligan
Anthony Gamboa
Doug and Laurie Garey
Give Lively Foundation
John Gloss
Susan Haesaert
Barbara Haight
Sabra and Peter Hill

Hillman Family Charitable Trust
Richard and Lisa Hillman
Pamela Holland
Gwen and Jerry Hoyt
Veronica James
Keith Jamison
James Kaper
Elizabeth Knupp
Jennifer Lagrotterai
Bess and Eric Langbein
Langbein Family Endowment Fund
Marty Liggett
Brad and JoAnne Long
Kathy 🍷 and Scott Luthcke
LynnCo LLC
Joanne Main
Joy Mathisen Ambrogio
Debbie Mayer
Townsend McNitt
Vollie and Maggie Melson
Taylor and Mike Milbradt
Jennifer Moll
Moms for Mental Health
Network for Good
OBXtek Inc.
Susan Okula
Joanne Olson
Kimberly Ross Page
Alecia Parker
Leigh A. Penfield
Anna Petto
Lara Phippen
Barbara and Richard Pleva
Providence Center
Tracey Pryce
R J Sullivan LLC
Traci Ramsey
RBC Capital Markets, LLC
Elaine Reed
Philip Reynolds
Sue Ann Ricciardi
Samara Richardson
Ashley Robison St. Clair 🍷 and
Wesley St. Clair
Michael L. Sanders
Jane Seiss
Chantel N. Sanford Smith
Cristina Smith
Lisa Snowden
Carolyn Sonnen
The Sparer Family Trust

Marjorie Sparer
T. Rowe Price Program for
Charitable Giving
Judy Templeton
Leslie Tilghman
Dr. Richard Tompkins
David Troy
Karen Lee Clark Revocable Trust
United Health Group
Lisa VanBuskirk
Kay Welti
Susan Williamson
Yumei Winebrenner
Anna Wood
Bill and Joan Woodward
Richard T. and Marcia Wright
YourCause, LLC
Renee Houston Zemanski 🍷 and
Greg Zemanski

2022 or 2023 CFAAC Board Member 🍷

2022 or 2023 CFAAC Staff Member 🍷



FUND FOR ANNE ARUNDEL



Every child deserves a happy, healthy future. That's why over the past four years the grants from CFAAC's Fund for Anne Arundel (FFAA) were directed to nonprofits that prioritize the physical, mental, and behavioral health of children and families. Since the FFAA's inception, CFAAC has raised \$1,349,771 to support it, half of which was placed into the fund's endowment to ensure its grantmaking power will continue. The FFAA is growing in its impact as interested community members continue to pool together their resources to support it. In 2022, CFAAC distributed seven grants to nonprofits totaling \$182,315 through the Fund for Anne Arundel.

In 2022, FFAA grant recipients included CASA of Anne Arundel County, Seeds 4 Success, Start the Adventure in Reading (STAIR) – Annapolis, Inc., Girls on the Run of the Greater Chesapeake, Severna Park Community Center, Superior Future, Inc., and The Complete Player Charity.

FUND FOR ANNE ARUNDEL 2022 GIFTS

\$500,000+

Larry Clark
Deerbrook Charitable Trust

\$5,000+

Madelyn Schaefer
Schaefer Family Fund

\$1000+

Schwab Charitable
Peter and Daphne Summers
Jonathan and Erin Williams
Williams Family Fund

UP TO \$500

Kimberly Broadie
Bryan T. Fishback
Frank and Laura Gagliardi
Michelle Johnston Smith
Mr. and Mrs. David Stern

DID YOU KNOW?

Since its inaugural grantmaking in 2020, the Fund For Anne Arundel has made 18 grants totaling \$536,565.

To learn more about the Fund For Anne Arundel, visit: cfaac.org/fund-anne-arundel.html

GRATITUDE. IT'S WHAT KEEPS DAVID IRVING GOING EVERY DAY. WELL, THAT AND MATH.



“I try to base everything on gratitude. I am truly grateful because I am so blessed and have been given so much; and I am grateful to give some of that back, whether it’s time or money. I try to do it with a smile. I have specific areas of focus and it’s all tied back to education.”

More than 20 years ago, David immersed himself in the education field, learning through his jobs at The Association for Supervision and Curriculum Development and Delta Education. Then, David founded HigherSchool Publishing Company and published *The Parent’s Guide to Better Grades, 7 Steps to Improve Your Child’s Academic Performance*. After that, David started HigherSchool Tutoring and then, created HigherSchool Instructional Services. He launched CollegeReadyMath in 2016 and subsequently retained ownership of it after selling HigherSchool in 2020. CollegeReadyMath focuses on algebra and getting students ready for college, which David believes to be his life’s mission. “I really love what I do and feel that what we do will eventually make a huge difference in the lives of a lot of students.”

DAVID’S VENTURE IN MATH STARTED IN A SURPRISING WAY...

Successful in financial sales and working for a Chicago investment firm, David was invited to volunteer at an inner city Chicago school to be “Principal for the Day.” It changed him, and he ended up going back to that same school every year for six years.

“It was a real eye opener to see a school that’s over 100 years old ... with missing windows in the dead of winter and kids who came to school with the same clothes they had on the day before. Most of them weren’t even getting a quality education because of the high teacher turnover in the school, which ultimately contributed to inconsistent instructional quality.”

After that experience and more than 25 years in financial sales and trading, he made the decision to commit the remainder of his career to improving the academic opportunities available to economically disadvantaged students.

“I THINK IT’S IMPORTANT TO BE A PART OF THE COMMUNITY YOU ARE IN AND GIVE BACK TO THOSE WHO ARE LESS FORTUNATE IN THAT COMMUNITY ... THE COMMUNITY FOUNDATION ALLOWS ME TO DO THAT.”

David joined CFAAC’s board in 2022 and opened a Donor Advised Fund soon after. While he admits there’s still a lot for him to learn, he knows that he can count on CFAAC to help him identify where his funds can best be applied. “There are so many areas of need that you have to prioritize; you have to set your focus as to what those needs are and then stick to that. The Community Foundation can help me do that. They provide support and they help keep donors’ assets safe.”

Celebration of PHILANTHROPY

Every year at our Celebration of Philanthropy we honor extraordinary community members and organizations who not only change lives, but also inspire others to make an impact. To date, we have honored 110 community members and organizations who give back in ways both large and small – investing in education, gathering donations, mentoring children, helping the homeless, and making our community a better place for all.

Our 22nd Annual Celebration of Philanthropy Awards Luncheon was a sold-out event, held on November 4th at The Graduate Hotel in Annapolis. Learn more about each recipient and find information for the 2023 Celebration of Philanthropy Awards Luncheon at www.cfaac.org/celebration-philanthropy.html



SCAN TO WATCH
EVENT HIGHLIGHTS



CAROL SISCO
*Philanthropist
of the Year*

*Pictured: Mary Grace Folwell,
Carol Sisco, and Mary Spencer*



TATIANA KLEIN
*Volunteer
of the Year*

*Pictured: Vincent Moulden,
Tatiana Klein, and Mary Spencer*



ELLA EDWARDS
*Young Volunteer
of the Year*

*Pictured: Dr. Coryse Brathwaite,
Ella Edwards, and Mary Spencer*



LIVE! CASINO HOTEL MARYLAND
*Corporate Philanthropist
of the Year*

*Pictured: John Rosso Jr.,
Ryan Eller, and Mary Spencer*



LEO ZERHUSEN
*Carol Thompson Lifetime
Achievement Award*

*Pictured: Larry Burrows,
Leo Zerhusen, and Mary Spencer*



CALANDRA DIXON LAYNE
*Carroll H. Hynson, Jr. Award for
Diversity, Equity, and Inclusion in
Philanthropy*

*Pictured: Andrea Beegle, Calandra
Dixon Layne, and Mary Spencer*



BRUCE MORGENSTERN
*Boots on the
Ground Award*

*Pictured: Dr. Neil Weissman,
Bruce Morgenstern, and
Mary Spencer*



**THE ESTATE OF DONALD AND
EMILY SHEETS**
Legacy Award for Planned Giving

*Pictured: Katherine H. Caldwell
accepting the award on behalf of the
late Donald and Emily Sheets*



1. 2022 Philanthropist of the Year, Carol Sisco, Dick Franyo, and Michelle Eichhorn
2. 2022 CFAAC Staff Members: Renee Houston Zemanski, Rosalind Calvin, Ashley Robison St. Clair, Mary Spencer, Kathy Luthcke, Damika Baker-Wilson, Kelli Williams, and Rosemary Calderalo
3. Peter Chambliss and Jane Campbell-Chambliss
4. CFAAC Board Chair, Jim Humphrey welcoming guests at the 2022 Celebration of Philanthropy Awards Luncheon
5. 2022 Young Philanthropist of the Year, Ella Edwards
6. Del. Shaneka Henson, Kris Valerio Shock, Kalah Zeigler, County Exec. Stuart Pittman, Dr. Coryse Brathwaite, and Beryl Downs
7. Anna E. Greenberg, Mary Spencer, and Larry Burrows
8. 2022 Carol Thompson Lifetime Achievement Awardee, Leo Zerhusen (left), speaking with Bill Thompson, husband of the late Carol Thompson

2022 CELEBRATION OF PHILANTHROPY SPONSORS

PLATINUM		<p>THE JIM & LINDA HUMPHREY FOUNDATION</p>			
GOLD	<p><i>Tara</i> BALFE CLIFFORD</p>	<p>Anne Arundel Medical Center Foundation Luminis Health.</p>  <p><i>Carol B. Sisco</i></p>			
SILVER					
BRONZE	<p>AACC Foundation Boatyard Bar & Grill Larry Burrows & Dawne Widener-Burrows Carl & Anita Gutschick Mr. & Mrs. David Mitchell</p>		<p>Rosso Commercial Real Estate Services Shore United Bank Bill Thompson Martha Van Woerkom</p>		
FRIENDS OF PHILANTHROPY	<p>Annapolis Maritime Museum Harry & Kate Caldwell Mary Grace Folwell & Jeff Riedle Hague Quality Water of Maryland</p>	<p>Warren & Anne Hamel The Junior League of Annapolis, Inc. Monarch Cybersecurity LLC John Olson, CFP, RICP, MBA</p>	<p>Mary & Dale Spencer Greg & Trish Strott Dr. Neil J. Weissman Karen M. Whaley, CPA</p>		
MEDIA PARTNER	<p>WHAT'S UP? MEDIA</p>				

PROFESSIONAL ADVISOR RECOGNITION SOCIETY

The Community Foundation of Anne Arundel County launched its Professional Advisor Recognition Society at the 2022 Celebration of Philanthropy, naming six inductees to its inaugural class. The Community Foundation of Anne Arundel County created the Professional Advisor Recognition Society to acknowledge professional advisors for their commitment to the community and their work to support philanthropy and encourage charitable giving across Anne Arundel County. You can learn more about each of these dedicated members at cfaac.org/PARS.

Pictured below, from left to right, are the 2022 inductees:
Richard T. Wright of The Wright Firm
Karen M. Whaley of Karen M. Whaley, CPA
Chadwick (Chad) Watson of Charter Financial Group
Michael E. Lehr of Sims & Campbell
Christine W. Hubbard of the Law Offices of Christine W. Hubbard, LLC
Frank Campbell of Sims & Campbell



DID YOU KNOW?

When transferred directly from your IRA to CFAAC, Qualified Charitable Distributions (QCDs) up to \$100,000, will be excluded from your taxable income, even if you don't itemize.

To learn more, contact your financial advisor or John Rodenhausen, CFAAC's Director of Gift Planning, at 410.280-1102 x103

INSIGHT. A TRIP AND A BABY SEA LION CHANGED ANDREA BEEGLE'S LIFE PERSPECTIVE.

Before she attended University of California, Berkley, to pursue a lacrosse scholarship, Andrea hadn't traveled much out of her close-knit Anne Arundel County neighborhood. In fact, her family and friends were wondering how long she would last in California. She made it, graduating cum laude in Mass Communications. After graduation, Andrea and her friends set out to "save the world," backpacking in parts of South America including the unique and pristine Galapagos Islands.

"I was sitting on a rock [in the Galapagos] and a baby sea lion came all the way up and jumped on my lap and began snuggling and kissing me. I thought, 'what just happened? This is what life is when you don't live in fear. This is harmony.' That moment really changed my perspective and actually inspired my career path; I knew I wanted to foster life-changing opportunities for more people."

ANDREA DESCRIBES HERSELF AS "A FINANCIAL ADVISOR WITH A NONPROFIT HEART."

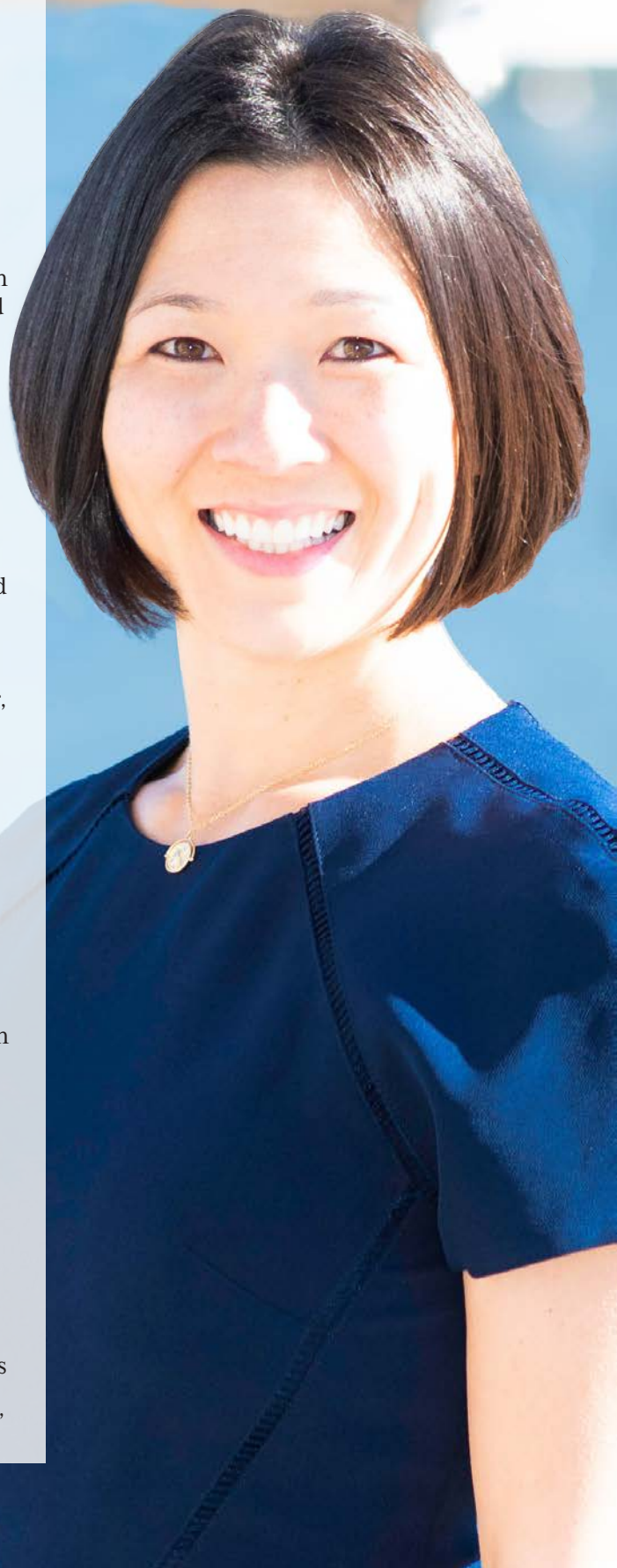
Andrea returned east and launched a 15-year career in nonprofit management, working at National Geographic, the United Nations Foundation, the Global Alliance for Improved Nutrition, and ultimately starting a 501c3 focused on maternal and early childhood nutrition. She has raised millions for causes; mobilized hundreds of thousands of supporters around issues of health, sustainable development, and social justice; and managed partnerships with celebrities, media, Fortune 500s, governments, and more. However, she always had a dream to work with her life-long mentor and father. In 2019, that dream came true. Andrea is working as a financial advisor beside him at Compass Wealth Strategies.

A GOOGLE SEARCH BROUGHT ANDREA TO THE COMMUNITY FOUNDATION. AFTER THAT, IT WAS LOVE AT FIRST SIGHT.

"There are so many issues and causes that it's hard to pick just one. So, when I was looking to get involved in my community and where to spend my time and resources, I wanted to find an organization that was at the heart of them all. I found the Community Foundation. I literally sent a cold-call email and was delighted when that email was answered with a warm response and invitation to learn more and get involved."

Andrea got involved immediately with the Celebration of Philanthropy, subsequently joining the CFAAC board. "The Community Foundation has broadened and deepened my sense of community. I feel more aware, more committed, more engaged. Really, I want to thank the Community Foundation for giving me a way to be a better neighbor."

In 2021, Andrea, her husband, and their three young kids opened a Donor Advised Fund. "The issues facing our community are interconnected, so it makes sense to invest in an organization that is at the intersection of them all. When your head and your heart are in the same place, that's how you know that you are on a good path."



FINANCIAL SUMMARY

COMBINED STATEMENT OF FINANCIAL POSITION

	12/31/2022*	12/31/2021
Assets		
Cash and Cash Equivalents	\$ 1,518,717	\$ 1,196,737
Contributions and Other Receivables	\$ 233,597	\$ 234,596
Investments	\$ 22,418,105	\$ 22,394,226
Other Assets	\$ 2,976,331	\$ 2,847,533
Total Assets	\$ 27,146,750	\$ 26,673,092
Liabilities and Net Assets		
Liabilities	\$ 1,968,474	\$ 424,628
Agency Funds	\$ 1,358,497	\$ 1,506,090
Net Assets	\$ 23,819,779	\$ 24,742,374
Total Liabilities and Net Assets	\$ 27,146,750	\$ 26,673,092

COMBINED STATEMENT OF ACTIVITIES

Support and Revenue

Contributions	\$ 6,318,863	\$ 4,867,048
Special Events	\$ 0	\$ 239,000
Other Income	\$ 4,629	\$ 14,872
Total Support and Revenue before Investment Returns	\$ 6,323,492	\$ 5,120,920

Investment Income or (Loss)	\$ (2,621,721)	\$ 2,569,916
Total Support and Revenue	\$ 3,701,771	\$ 7,690,836

Grants and Expenses

Grants and Charitable Expenditures	\$ 4,138,366	\$ 4,014,865
Operating Expenses	\$ 486,000	\$ 450,433
Total Grants and Expenses	\$ 4,624,366	\$ 4,465,298

Change in Net Assets	\$ (922,595)	\$ 3,225,538
Beginning Net Assets	\$ 24,742,374	\$ 21,516,836
Ending Net Assets	\$ 23,819,779	\$ 24,742,374

*Unaudited Figures. Audited Financial Summary available upon request when completed.

FUND BALANCES INTENDED FOR GRANTMAKING

(Endowed and Non-Endowed Funds)

Discretionary	\$ 1,529,976
Designated Purpose	\$ 1,293,721
Nonprofit Endowment	\$ 1,389,884
Corporate Advised	\$ 1,369,226
Donor Advised	\$ 14,840,799
Field of Interest	\$ 206,727
Giving Circle	\$ 558,251
Scholarship	\$ 555,060
Pledges	\$ 3,271,844



Let us help
you make your
charitable giving
even more effective.

Contact us at
410.280.1102.

GIFTS MADE IN HONOR OR MEMORY

The contributions listed below honor the memory of a loved one, pay tribute to a friend, or commemorate an anniversary, graduation, milestone, or special occasion. Contributions can be directed to a previously established fund at the Community Foundation or, in some cases, directed to new funds established in honor of that person or event. These gifts create a lasting legacy with the potential to positively impact the community for years to come.

ANDREW KIRACOFÉ MEMORIAL FUND

In memory of Andrew Kiracofé

Sarah Brown
Fidelity Charitable Gift Fund
Scott Kaspick and Susan Termohlen
Kaspick/Termohlen Family Fund
Kate, Matt, and Maezie Jane
Phil and Lindsay Kiracofé
Alice Leich
Christopher Leich
Christine Nicolov
Emily Parkhurst
Silicon Valley Community Foundation
Wilson Perumal & Company
Harriet Yaffe

ANNA E. GREENBERG LEADERSHIP FUND

In honor of Anna Greenberg

Larry Burrows and Mrs. Dawne
Widener-Burrows
Larry and Dawne Burrows Fund
Vanguard Charitable
National Philanthropic Trust
David and Lily Openshaw
Ron and Joan Pinsky

ANNE ARUNDEL COUNTY ANIMAL CONTROL FUND

In memory of Buddy

Jurick, Robert, and Penelope

In memory of Bentley and Fatty Celtis

Jacqueline Wilkotz

In memory of Wayne and Elizabeth DeBow

Sharon and Jackie Moffatt

In honor of Mary Ellen

Mary Weigand

In memory of Feather

Marlise Mason

In memory of Maura Jewett

Leslie Jewett

Jade Klinger

In memory of Shelley Mick

Jill Caravan
Caren Cramer and Family
Greg and Mary Fries
Patt Howell
Lucinda Soltys

In honor of Kitten Adoptees: Pedro Jones and Carrie May

Carol McNitt

In honor of Camille and Bob Privette

Michael Spurlock

In memory of George H. Ruggles

Nancy Mullen

In Memory of Ellen Shiery's cat, Maggie

Ashley Robison St. Clair

In honor and memory of Betty White

Melissa Badger
Marcia Brown
Alison Cherowitzo
Rebecca Daniels
Sue Dunaway
Joan Duryee
Brittany Eyring
Janice Elizabeth Fliggins
Neil Leo Fluhr
Lauren Garber
Donna C. Gardner
John Halmi
Barbara Halpern
Denise Harbaugh
Lawrence C. Herzig
Joanna Hopkinson
Cassandra E. King
Janea Lakis
Zoe C. Larbig
Ruth Lopez
Margaret M. Mardiros
Shannon Mavica
Frances McMahon
Casey Merolla
Julie Nauroth
Christie Ann Petrovich
Chad S. Phillips
Sophia Phillips
Erin Rauth
Stacy Robinson
Jim Rosenthal
Angela Tipton
Denise Tolbert
D. Edward Vogel
Debbie Warman
Joan Wright
Patti Wulff

In memory of Mike Williams

Richard Williams

In honor of Isla Zink

Addie K/Isla Z

ANNE ARUNDEL COUNTY FIRE DEPARTMENT FUND

In memory of Wayne Brown

Judy Mahoney

In memory of David Oplinger

Debbie and Mike Barrett
Marianne Oplinger
Wendy Wilson

In memory of Geneva Smith

Maria and Art Cederakis
Lindsay Morris
Beverly Anne Petrucco
George Petrucco

ANNE ARUNDEL COUNTY POLICE DEPARTMENT FUND

In memory of Terry January

Cathi Forbes
Eric Colvin
FOP Lodge 70
Raab, Matt, and Heather

ANNE ARUNDEL COUNTY WOMEN GIVING TOGETHER GRANT FUND

In honor of Bronwyn Belling

Rosemary Claire

In memory of Andrew Kiracofé

Emily Parkhurst

In honor of Marion Kryza

Kathleen Kryza
Schwab Charitable

In memory of Emily Schindler

Jane Schindler

BATZOLD CHIEN CHARITABLE FUND

In memory of Fred Batzold

Bank of America Charitable Foundation
Mark and Judith Chien
Nadine Chien

BETSY BROWN RUZZI EDUCATION FUND

In honor and memory of Betsy Brown Ruzzi

Anonymous (3)
Jane Abitanta and David Paul
Katherine Armendt and Ross Sorci
Bank of America Charitable Foundation
James R. Banks and Claire M. Stackhouse
Cathy Barclay
Tim and Sue Barnicle
Dave and Joan Barram
Sandra Bhyrne
Scott Bourdeau
Paul and Paula Chaney
Charles E. Taylor
Charles Corey
Dennis and Ellen O'Brien
Fidelity Charitable Gift Fund
Gina and Brian Flood
Gretchen R. Cheney
Jeff Hahn
Susan and Charles Hahn, Betsy's Parents
Rachel Hise
Susan and Keith Jacobs
Joss Family Fund
Robert Joss
Jacqueline Kraemer
David and Diane Mandel
Rodney Marshburn
Allister Nelson
Wilke and Karen Nelson
Ralph and Jill Nigro

*In honor and memory of Betsy Brown Ruzzi,
continued*

Emily Nissan
OM and Saraswati Bahethi Foundation USA, Inc
Ina Rosenthal
Schwab Charitable
Bob Schwartz and Nancy Hoffman
Susan Sclafani
Doug Smith
Vivien Stewart
Susan Sullivan
Marc Tucker and Kathy Bonk
Matt Tucker
Bill and Jeanne Worrall
Harold Zahn

**BO DEPAOLA FAMILY FOUNDATION FUND,
BO'S EFFORT**

In memory of Bo DePaola

The Ann & Frank Cahouet Foundation
Bo's Effort
Crossfire 321, LLC
John and Jill DePaola
Fidelity Charitable Gift Fund
Izzo Family Foundation
Marlene Long
Vance and Sherri Mitzner
Network for Good
Toyota of Bowie
Sandra Tylor

**CAPITAL GAZETTE MEMORIAL
SCHOLARSHIP FUND**

In memory of Mary Grace Scoggins

Katharine Moore

CAROL THOMPSON FUND

In memory of Carol Thompson

Brenda and David Brown
Bill Thompson

COMMUNITY CRISIS RESPONSE FUND

In honor of Anne Hamel

Alison Gilbert

COMMUNITY LEADERSHIP FUND

In honor of Rebecca Allyn

Rebecca Allyn

In honor of Bud Billups

Bowen Billups

In memory of Tillie & William Blumstein

Tillie & William Blumstein Family Foundation

In honor and memory of Helen Eileen Clapsadle

Anonymous
Catalent Pharma Solutions

In memory of Ernest Clayton, Jr.

Marty Liggett

In memory of Thomas Michalowicz

Marty Adelman

In memory of Edward Muller, III

Mark Zablotny

In memory of Jerry Sparer

Marj Sparer
The Sparer Family Trust

In honor of Greg Strott

Bowen Billups

In memory of Paul Vvasakder

Dr. Richard Tompkins

DANNY'S FUND

In memory of Danny Gerety

Margie Kosmerl
Live Give Run Foundation, Inc

EWE SPIRIT FUND

In memory of Geoff Ewenson

Christina Mudd
Mark Wheeler

GALEN'S GIFT

In memory of Galen Meehan

Sheila Meehan

JOHN STARR MEMORIAL MUSICIAN'S FUND

In memory of John Starr

Marie Brockhurst
Brad Feldman
Ashley Newman
Richard and Barbara Pleva
Nicholas Sharp
Mary and Dale Spencer
Mary and Dale Spencer Charitable Fund

**KAREN FELDMAN ENDOWMENT FUND FOR
SEEDS 4 SUCCESS**

In honor of Victoria Dundics

Gabrielle Campbell

In memory of Karen Feldeman

Anonymous (2)
Matthew Martelli
Cynthia McKee
Angela and Edward Pوناتoski
Thomas Streiff
Les Ward
Everett and Tsili Wolf

PERINATAL LOSS FUND

In memory of Chandler John Norton

James and Elizabeth Norton

TRUDY MCFALL FUND

In honor of Trudy McFall

Homes for America

WOMEN AND GIRLS FUND

In memory of Paul E. Taylor, Jr.

Margaret Taylor



**SPECIAL PEOPLE DESERVE
SPECIAL RECOGNITION**

**A truly thoughtful way to
remember others.**

CFAAC offers many opportunities to help you recognize special people who have made a difference in your life and in the life of the community. We accept donations made as a tribute or memorial to an individual, family, or organization. Special funds can also be created to handle specific tributes and memorials.

Contact us to learn more:
410.280.1102 or visit
cfaac.org/Legacy

DISCRETIONARY FUND GRANT PROGRAMS

CFAAC distributed nearly \$4 million dollars in community grants last year to a variety of nonprofit organizations. The following focused community grant programs help to fund programs or initiatives that make Anne Arundel County a great place to live for all.



ARTS AND CULTURE ANNE ARUNDEL FUND

This fund was created to enhance the vibrancy and creativity of Anne Arundel County. Grants are used to provide access and opportunities for economically challenged individuals and families to experience and/or participate in visual, fine, decorative, and folk arts as well as literature and language programs.



COMMUNITY CRISIS RESPONSE FUND

This fund provides flexible financial assistance to Anne Arundel County nonprofits immediately following a violent incident, natural disaster, or other crisis in our community. In 2022, grants were awarded to nonprofits that provided human services and emergency assistance, as well as health, mental health and educational resources.



ENVIRONMENT ANNE ARUNDEL FUND

The fund supports Anne Arundel County nonprofits working to protect and improve the environment in the County and the Chesapeake Bay. Grants support projects that improve and green communities, address environmental issues such as stormwater, and/or increase student awareness and involvement in the restoration and protection of the Chesapeake Bay, local streams and rivers, and other natural areas.



FUND FOR ANNE ARUNDEL

This fund was created to strategically align CFAAC's grantmaking with the findings of its Community Needs Assessment Report: *Poverty Amidst Plenty VI*. This fund supports nonprofits doing vital work to address the most pressing needs of Anne Arundel County residents now and in the future. Read more about the FFAA on page 22.



GRANTS 4 TEACHERS FUND

This fund supports highly creative ideas that would otherwise be impossible due to school system funding constraints. Grants support teachers' imaginative ideas to stimulate and inspire Anne Arundel County Public School students' learning such as allowing teachers to help students find and follow their passions.



HELP OUR NEIGHBORS FUND

This fund provides grants to local nonprofits that assist individuals and families in need by providing emergency assistance, such as covering immediate living expenses like paying rent to prevent eviction, utilities to prevent shutoff, fees for transportation to work or car repair, or for essential medication and medical care to return to or maintain their health.



STRENGTHENING NONPROFITS FUND

The fund provides support for local nonprofits through *Community Impact Speaker Series* training programs, and events that assist Anne Arundel County nonprofits to develop organizational capacity around fundraising, nonprofit management, board development, marketing and communications as well as other capacity-building opportunities.



WOMEN AND GIRLS FUND

Grants from this fund are used to support nonprofits that help women and girls pursue positive, productive lives by helping remove barriers for women and girls, increase their economic security, enhance their well-being and safety, and empower them to make positive life decisions for themselves and their families.

**LEARN MORE ABOUT HOW CFAAC HELPS
BUILD AND STRENGTHEN OUR COMMUNITY
AT WWW.CFAAC.ORG/GRANTS.HTML**

CFAAC'S DISCRETIONARY FUNDS DONORS

CFAAC's Discretionary Grant Funds allow us to respond to emerging needs in our community. These funds are targeted to a field of interest and are broad in scope, allowing us the flexibility to use the funds where they can have the greatest impact. *Fund for Anne Arundel donors are listed on page 22.*

\$10,000+

Strengthening Nonprofits Fund

Andrew and Leslie Price

\$5,000 TO \$7,499

Help Our Neighbors Fund

The Honorable Beverly Sherman Nash

\$1,000 TO \$2,499

Grants 4 Teachers Fund

Bud Billups

Madelyn Schaefer

Schaefer Family Fund

The Sunshine Fund

Strengthening Nonprofits Fund

John and Jill DePaola

Bo DePaola Family Foundation Fund, Bo's Effort

\$500 TO \$999

Environment Anne Arundel

Dr. Tyson Bross

Help Our Neighbors Fund

Thomas Croghan

The Vineyards at Dodon

Mike and Lisa Pellittiere

UP TO \$250

Grants 4 Teachers Fund

Fidelity Brokerage Services LLC

Frank & Laura Gagliardi

Barbara & Richard Pleva

Barnett and Francine Rattner

Help Our Neighbors Fund

Fidelity Charitable Gift Fund

The Light House Homeless Prevention Center

Alecia Parker

David Southwick

Women and Girls Fund

David and Jan Hoffberger

Sharon Lanasa

Barbara & Richard Pleva

Ashley Robison St. Clair

Margaret Taylor

2022 CFAAC GRANTEES

Alliance for the Chesapeake Bay
 American Bird Conservancy
 American Cancer Society
 American Civil Liberties Union
 Foundation of Maryland, Inc.
 American Diabetes Association
 American Heart Association Greater
 Washington Region
 American Pediatric Surgical Association
 Foundation
 American Red Cross - National Capital
 & Greater Chesapeake Region
 American Red Cross - Southern
 Maryland Chapter
 Americares
 Annapolis Film Festival, Inc.
 Annapolis Green
 Annapolis High School
 Annapolis Immigration Justice Network
 Annapolis Maritime Museum & Park
 Annapolis Opera
 Annapolis Summer Garden Theatre
 Annapolis Symphony Orchestra
 Annapolis Yacht Club Foundation
 Anne Arundel - Annapolis Community
 Emergency Response Team
 Anne Arundel Community College
 Foundation
 Anne Arundel Conflict Resolution
 Center
 Anne Arundel County Animal Control
 Anne Arundel County Department of
 Aging
 Anne Arundel County Department of
 Social Services
 Anne Arundel County Fire Department
 Anne Arundel County Food Bank
 Anne Arundel County Partnership for
 Children, Youth and Families
 Anne Arundel County Police
 Department
 Anne Arundel County Public Library
 Foundation
 Anne Arundel County Recreation &
 Parks Department
 Anne Arundel County Watershed
 Stewards Academy, Inc.
 Anne Arundel Women Giving Together
 Arts Council of Anne Arundel County
 Arundel Christian Church
 Arundel House of Hope
 Arundel Lodge, Inc.
 Arundel Rivers Federation
 Arundel Volunteer Fire Department

Asbury Church Assistance Network
 Assistance League of the Chesapeake
 Banneker-Douglass Museum
 Foundation, Inc.
 Bay Journal Media
 Bello Machre, Inc.
 Bemorecaring, Inc.
 BirdsCaribbean
 Bishop McNamara High School
 Bkind, Inc.
 Blessed in Tech Ministries Incorporated
 Boy Scouts of America, B.A.C.
 Boys & Girls Clubs of Annapolis & Anne
 Arundel County Inc.
 Boys & Girls Clubs of Metro Richmond
 Boys & Girls Clubs of Southeast Virginia
 Bridges to Housing Stability
 Buzzards Bay Coalition, Inc.
 By Their Side
 Calvary United Methodist Church
 The Calverton School
 Camp St Charles
 CARE
 Caring Cupboard LLC
 CASA of Anne Arundel County
 Center for Science in the Public Interest
 Center of Help, Inc.
 Central Union Mission
 Charting Careers, Inc.
 Chesapeake Arts Center
 Chesapeake Bay Foundation
 Chesapeake Bay Trust
 Chesapeake Cares Food Pantry
 Chesapeake Charities
 Chesapeake Legal Alliance
 Chesapeake Region Accessible Boating
 (C.R.A.B.)
 Chesapeake Shakespeare Company
 Theater
 Child Builders
 Child's Play
 Christ Child Society of Annapolis
 Christian Community Service Center
 Christmas in April - Calvert County,
 Inc.
 Chrysalis House Inc.
 The Citadel
 Clemmons Food Pantry
 Coastal Conservation Association of
 Maryland
 Colonial Players, Inc.
 Columbia Festival of the Arts

Community Alliance of South County
 Community Ecology Institute
 Community Family Life Services
 Community Foundation of Bloomington
 and Monroe City, Inc.
 Community Foundation of Howard
 County
 Compass Rose Theatre
 The Complete Player Charity
 Connecticut College
 Convoy of Hope
 Co-op Arundel, Inc.
 Cornell Lab of Ornithology
 Creating Communities
 Creighton University
 Cystic Fibrosis Foundation
 Death with Dignity National Center
 DeCesaris/Prout Cancer Foundation
 Doctors Without Borders USA
 Drink at the Well
 Eastport United Methodist Church
 Education Foundation of Anne Arundel
 County Public Schools
 Elmira College
 Farming 4 Hunger
 Feeding America
 Ferndale Early Education Center
 The Fletcher School
 Foundation 4 Heroes
 Fourth Presbyterian Church
 Friends of the Jefferson Patterson Park
 and Museum
 Frostburg State University Foundation
 Fund for Anne Arundel Endowment
 George Cromwell Elementary School
 Gesu School
 Ginger Cove Foundation
 Girls on the Run of the Greater
 Chesapeake
 Growth Action Network of Anne
 Arundel County
 Habitat for Humanity Metro Maryland
 Habitat for Humanity of South
 Hampton Roads
 Habitat for Humanity of the Chesapeake
 Habitat for Humanity of Wicomico
 County
 Habitat for Humanity Peninsula and
 Greater Williamsburg
 Harvest Resources in Anne Arundel Co.
 Healing Art Missions
 HeartSmart - The Cliff R.Roop Cardiac
 Support and Education Foundation

Hellenic College Holy Cross Greek Orthodox School of Theology
 Helping Up Mission
 HELPS International
 High Country News
 Homes for America
 HOPE For All
 Hope House
 Hospice Cup
 Hospice of the Chesapeake
 Howard Community College Educational Foundation, Inc.
 Humane Society of the United States
 Indian Creek School
 International Chapter P.E.O. Sisterhood
 International Rescue Committee, Inc.
 International Society for Third-Sector Research
 Jacob's Ladder Youth Foundation, Inc
 Johns Hopkins University
 Joy Reigns Lutheran Church
 Jubilee JumpStart
 Junior League of Annapolis, Inc.
 The Key School
 Lake Shore Elementary
 The Landon School
 Leadership Anne Arundel
 Leadership Howard County, Inc.
 The Leukemia & Lymphoma Society
 The Leukemia & Lymphoma Society - Mid Atlantic
 The Light House Homeless Prevention Center
 Lighthouse ArtCenter
 Limb Kind Foundation
 Luminis Health Anne Arundel Medical Center
 Luminis Health Anne Arundel Medical Center Foundation
 Luminis Health Doctors Community Medical Center Foundation
 MacArthur Middle School
 Mariners Outreach Foundation
 Marshall Hope Corporation
 Maryland Food Bank
 Maryland Hall for the Creative Arts
 Maryland League of Conservation Voters Education Fund
 Maryland Therapeutic Riding, Inc.
 Maryland VOAD
 Maryvale Preparatory School
 Massachusetts Institute of Technology
 Meade High School
 Meals on Wheels of Central Maryland
 Misericordia University
 Mitchell Gallery at St. John's College
 Morgan State University Foundation
 MPT Foundation
 Muscular Dystrophy Association
 My Life Foundation, Inc.
 NAMI Maryland, Inc.
 National Alliance on Mental Illness (NAMI) Anne Arundel County
 National Aquarium, Inc.
 National MS Society/Greater DC-MD
 North County Emergency Outreach Network
 OIC of Anne Arundel County, Inc.
 Opportunity Builders, Inc.
 Park Avenue United Methodist Church
 Partners In Care Maryland
 Pediatric Trauma Society
 Peninsula Athletic League
 Planned Parenthood of Maryland
 Princeton in Asia
 Providence Center
 Raising a Reader
 Rebuilding Together Anne Arundel County
 Richmond Metropolitan Habitat for Humanity
 Rockville Women's Center
 Romanian Christian Enterprises
 Saint Bernadette School
 Saint Mary's Royal Blue Club
 Salisbury University
 Salvation Army - Glen Burnie
 Samaritan Inns
 Scenic Rivers Land Trust, Inc.
 Scholarships for Scholars, Inc.
 Seeds 4 Success, Inc.
 Serenity Sistas
 Services From the Heart
 Severn Elementary School
 Severn River Association, Inc.
 Severn River Middle School
 Severn School
 Severna Park Community Center
 Severna Park High School
 Shallow Water Blackout Prevention
 Simon Wiesenthal Center
 Skipjack Youth Athletics
 SMAR Cares
 Smithsonian Environmental Research Center
 So Others Might Eat
 Southern Poverty Law Center
 SPAN, Inc.
 SPCA of Anne Arundel County
 St. Anne's Episcopal Church
 St. Ann's Center for Children, Youth and Families
 St. John's College High School
 St. Jude Children's Research Hospital
 St. Luke's United Methodist Church
 St. Martin's in the Field Day School
 St. Mary's Parish
 St. Paul's School
 Start The Adventure In Reading (STAIR) - Annapolis, Inc.
 Stewart Musical Productions, Ltd
 Stocks in the Future
 Stone Ridge School of the Scared Heart
 Strides for Peace
 Superior Future, Inc.
 Tahirih Justice Center
 Tappahannock Essex County Regional Animal Shelter
 Team Rubicon, USA
 Tennis Alliance of Anne Arundel County
 The Way Homes, Inc.
 Touchstones Discussion Project
 Tunnel to Towers Foundation
 Ukrainian National Womens League of America
 Ulman Foundation
 UMBC
 UNICEF USA
 United States Holocaust Memorial Museum
 University of Maryland
 University of Maryland College Park Foundation, Inc.
 University of Notre Dame
 US Naval Academy Foundation
 USA for UNHCR
 Vested Interest in K9s
 Wake Forest University School of Medicine
 Washington & Lee Universtiy
 We Care and Friends
 Webber International University
 Wellness House of Annapolis
 Wellspring Life Ministry
 World Wildlife Fund
 WTMD
 YWCA of Annapolis and Anne Arundel County

HOW TO PARTNER WITH CFAAC TO SUPPORT YOUR PHILANTHROPY



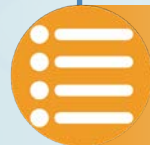
Donate Through CFAAC



I Want to Establish a New Fund



I Want to Give to an Existing Fund



See a List of Funds at cfaac.org/funds



Unrestricted



Partially Restricted



Restricted



Scholarship Fund



Field of Interest Fund



Designated Funds



Discretionary Grant Fund



Donor Advised Funds



Nonprofit Agency Fund



Distribution Options



Endowed Funds

Gifts are invested and grants are distributed annually, supporting the cause in perpetuity.



Non-Endowed Funds

Grants are distributed at the donor's discretion.

CONTACT OUR DEVELOPMENT TEAM AT 410.280.1102 FOR MORE INFORMATION ON HOW TO MAXIMIZE YOUR CHARITABLE GIVING.

INCLUSION. TOUGH TIMES DURING THE PANDEMIC HELPED OBI REEVALUATE AND EXPAND THEIR REACH.

When Marsha Legg became Chief Executive Officer of Opportunity Builders, Inc. (OBI), it was in the middle of the pandemic.

Tasked with not only keeping the doors open at the nonprofit that is dedicated to engaging individuals with disabilities in new opportunities, she also needed to make sure programming for OBI's clients remained on track so they could get back to work when the time came.

"It was a tough time," said Marsha. "We had to cross train people and transform practically every aspect of our operations. And, after Covid, we had to rely heavily on grants and generous donations to reopen the doors of our 41,000 square foot building."

OBI survived and even thrived after the pandemic. In fact, in 2021, the organization decided to revise their mission to expand their reach in the community, "to support youth and adults with disabilities to experience full inclusion in their communities as they learn, work, and pursue their paths to personal success."

Marsha explained, "We updated our mission as we recovered from Covid to serve youth—specifically high school students—as well as adults. We also expanded it to include all disabilities, not only developmental and intellectual, but also behavioral health, mental health, and physical disabilities."

Being new to the organization and to Anne Arundel County, Marsha relied on the Community Foundation's Community Needs Assessment: *Poverty Amongst Plenty, VII*, to inform her and the organization's leaders about the needs in the community.

"One of the most useful things for us is the Community Needs Assessment report," said Marsha. "It's a powerful document. The data has helped us to understand what people need in different neighborhoods. I can't tell you how nice it is to have something consolidated in that format."

HOWEVER, CFAAC'S RELATIONSHIP WITH OBI GOES BEYOND THE USEFULNESS OF THE DATA-PACKED COMMUNITY NEEDS ASSESSMENT REPORT.

The nonprofit had opened an Agency Endowment Fund with the Community Foundation in 2019 to ensure the organization's sustainability and broaden OBI's awareness in the community.

OBI Board President Bill Kuethe recalled, "Many of us on OBI's board were aware of the Community Foundation since its inception. So, when Vicki Callahan [OBI's CEO at the time] approached us about opening an endowment fund at the Community Foundation, we liked the idea and thought that it was an opportunity for more exposure in the community."

"And of course, the Community Foundation is such a well-respected organization, we like having the partnership," he added. "We knew the fund would be well-managed by a professional organization with a great reputation in the community. We thought it would deliver additional exposure for us as well as provide us assistance in managing an endowment fund."



Photo courtesy of OBI



SPEAKER SERIES EVENTS

Every year, CFAAC provides the community with events that cover a wide-range of topics to connect others with ideas and skills to strengthen our county.

COMMUNITY IMPACT SPEAKER SERIES

Understanding the Urgency for—and Hope around—Restorative Practices in Anne Arundel County Public Schools

Presenter: Kathryn B. Rockefeller, J.D., Anne Arundel County Public School Climate Specialist

Meet Our County’s Equity, Diversity, and Inclusion Team and Learn How to Apply the Equity Lens at Your Workplace

Presenters: Pete Hill, Anne Arundel County Director of Equity, Diversity, and Inclusion, and Asha Smith, Anne Arundel County’s Equal Opportunity and Human Relations Officer

Strategic Leadership for Nonprofit Leaders

Presenter: Joann Vaughan, Former Executive Director at Maryland Federation of Art

Co-hosted with the Junior League of Annapolis, Inc.

Fundraising: How to Make the Ask and Why You Should

Presenter: Liz Farr, Senior V.P. & Independent Schools Practice Leader, Grenzebach Glier and Associates

Co-hosted with the Junior League of Annapolis, Inc.

Back to School with Trauma in Mind: A Community Conversation

Presenter: Pamela Brown, Ph.D., Executive Director, Anne Arundel County Partnership for Children, Youth and Families

Diversity, Equity, Inclusion, and Belonging 101: A Career and Life Primer

Presenter: Karen Bond, Director Of Strategic Partnerships, University of Maryland, The Judge Alexander Williams Policy Center

Co-hosted with the Junior League of Annapolis, Inc.

brainSHIFT for Women Leaders: Brain Science of Beating Burnout

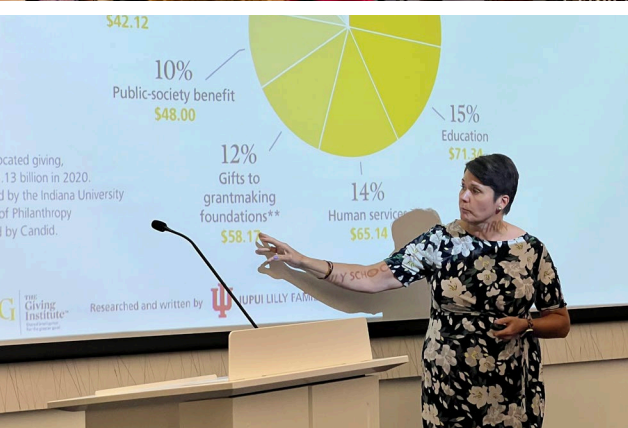
Presenter: Dr. Romila “Romie” Mushtaq, M.D., Neurologist and Chief Wellness Officer of Evolution Hospitality

Co-hosted with the Junior League of Annapolis, Inc.

Girls on the Brink—Raising Emotionally Healthy Girls: An Evening of Conversation with Author Donna Jackson-Nakazawa

Presenter: Donna Jackson-Nakazawa, Author

Interviewer: Dr. Faith Hackett, Severna Park Pediatrician



ANNA E. GREENBERG BOARD LEADERSHIP EVENT

The Board's Role in Organizational Resilience

Presenters: Eliot Pfanstiehl, Retired Founder and CEO Emeritus of Strathmore Hall Foundation, Inc., and Monica Jeffries Hazangeles, President and CEO of the Strathmore Hall Foundation



PLANNED GIVING SPEAKER SERIES

LGBTQ Estate Planning Webinar

Presenter: Lee Carpenter, Attorney with Niles, Barton & Wilmer

Make a Will Seminar

Presenter: Rosemary Calderalo, 21/64 Certified Advisor

Women's Edition: How to Go From Overwhelmed to Empowered Through Estate Planning

Presenter: Attorney Elsa W. Smith, Founder and Principal of the Law Offices of Elsa W. Smith, LLC



COMMUNITY NEEDS ASSESSMENT PRESENTATION OF *POVERTY AMIDST PLENTY VII: MOVING FORWARD TOGETHER*

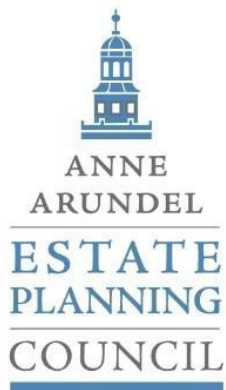
Learn more about the Community Needs Assessment Report on page 11.

Presenter: Pamela Brown, Ph.D., Poverty Amidst Plenty VII Author and Executive Director, Anne Arundel County Partnership for Children, Youth and Families



**LEARN MORE ABOUT OUR
2023 SPEAKER SERIES EVENTS AT
WWW.CFAAC.ORG/EVENTS-CALENDAR.HTML**





2022 ANNE ARUNDEL ESTATE PLANNING COUNCIL

The mission of the Anne Arundel Estate Planning Council (AAEPC) is to provide opportunities for wealth planning professionals from various disciplines to interact, share ideas, and build relationships that will allow them to better serve their clients and the community. The Council provides quarterly education programs and networking events for professional advisors. The AAEPC continues to grow with the financial support of its members and sponsors.

To learn more about AAEPC visit: www.aestateplanning.org.

2022 AAEP EXECUTIVE COMMITTEE

Brett F. Baldino, President
Rosenberg Martin Greenberg, LLP

Sean O'Neill, Vice President
RBC Wealth Management

Diane Brewer, Secretary
HeimLantz CPAs and Advisors

Lisa Kittner, Program Chair
Morgan Stanley

Christopher Hovell,
Communications Chair
PNC Wealth Management

Zachary Reichenbach,
Member Chair
Vallit Advisors

Justin Roudiez, Sponsorship Chair
White Oak Wealth Management, LLC

Billy Hufnell
Bay Point Wealth Management

Stacey Nicholson
CNR Insurance

Zoe Kerasidis
Sims & Campbell

Matthew Pearl
Sims & Campbell

Annmarie Kirby
HeimLantz CPAs and Advisors

MEETING SPONSORS



Wealth Management

WINE DOWN WEDNESDAY SPONSORS





GOLD MEMBERS

Bagley & Rhody, P.C.

Nicholas Crivella
Brittney Grizzanti

Bay Point Wealth Management

Billy Hufnell
William Hufnell

Fidelity Investments

Joelle Gotimer
Daniel Wittig

HeimLantz CPA's and Advisors

Diane Brewer
Annmarie Kirby

Lombardo Ayers & Company, LLC

Allen Ayers
Debra Walker

Mullen, Sondberg, Wimbish & Stone, P.A.

Eric Siegfried
Philip Wimbish

Sims & Campbell

Frank Campbell
Michael E. Lehr

Sinclair Prosser Gasior

Jon Gasior
Colleen Prosser

Toal, Murray, Day & Lalor, LLC

Adrienne Day
Ruth Trilli

Vallit Advisors

Charles Rains
Zach Reichenbach

White Oak Wealth Management, LLC

David Berger
Justin T. Roudiez

SILVER SPONSORS

CHEN Law, LLC

Karl Chen

Karen M. Whaley, CPA

Karen M. Whaley

Atlantic Financial Group, LLC

Capt. Brett M. Sause

IKOR Global

Lewis Myers

Liff, Walsh, and Simmons LLP

Gregory J. Ferra

Murray, McGehrin & Shiery

Ellen Shiery

Northrop Realty - A Long & Foster Company

Kristi Neidhardt

Premier Planning Group

Stephen Holt

BRONZE SPONSORS

Bessemer Trust

Chris Pintauro

FNB Wealth Management

Christopher Davis

Sandy Spring Trust

Greg Pearce

Stavely & Sallitto Elder Law, LLC

Elena Sallitto

Vintage Financial Partners

Brian Oettinger

Wells Fargo

Bert Moreland

Bay Point Wealth Management

Lyn A. Dippel

Feldman Wealth Advisory, LLC

Charles J. Feldman

C. Beach Brown, LLC

Cecilia Beach Brown

CNR Insurance

Stacey E. Nicholson

Council Baradel

Maria McKenna

Edward Jones Investment

Crystal S. Barker

FinanceForward, LLC

Elaine Shanley

Fisher Law Office

Randall Fisher

Franke Beckett, LLC

Jonathan G. Lasley

Frost & Associates

Leanne Broyles

JDKatz, P.C.

Katelyn E. Holbrook

Cailin Jean Talbert

Kullman CPA, LLC

Barbara G. Crocker

Law Office of Cheri P. Wendt-Taczak, LLC

Cheri P. Wendt-Taczak

Law Office of Steven M Berger, LLC

Steven M. Berger

Law Offices of Christine W. Hubbard

Christine W. Hubbard

Long Financial Services, Inc.

Brad Long

McNamee Hosea

Danielle Cruttenden

Moran Stanley Wealth Management

Lisa Kittner

PNC Wealth Management

Christopher Hovell

RBC Wealth Management

Margaret M. Jackson

Sean O'Neill

Rosenberg Martin Greenberg, LLP

Brett Baldino

Sims & Campbell

Zoe Kerasidis

Sarah Thirway

Skipper Law, LLC

Jessica L. Walsh

StoneBridge Advisors

Robert Stachura

The Wright Firm

Richard T. Wright



WAYS TO GIVE

CFAAC assists donors in achieving their philanthropic goals through the creation of new funds and through increased contributions to existing funds; reflecting our goal of connecting people who care to contribute to causes that matter. Donors have the ability to make gifts to CFAAC using a variety of assets including cash, appreciated stock, and life insurance, and receive the maximum allowable tax advantage.

CHECK

Please make your check payable to the Community Foundation of Anne Arundel County, and include the name of the fund to which you are donating on the memo line.

Mail your check to:

Community Foundation of Anne Arundel County
900 Bestgate Road, Suite 400, Annapolis, MD 21401

CREDIT CARD

You can make a single or recurring gift to any of CFAAC's funds by making a secure credit card donation online at cfaac.org or calling CFAAC at 410.280.1102.

WIRE TRANSFER

To make a wire transfer, please contact our Director of Finance and Operations, Kathy Luthcke, at kathy@cfaac.org or call 410.280.1102 ext. 105.

DONATE STOCK

Donating appreciated stock can reduce donors' capital gains while supporting the causes that matter to them. To make a donation of stock, please contact our Director of Finance and Operations, Kathy Luthcke, at kathy@cfaac.org or call 410.280.1102 ext. 105.

IRA CHARITABLE ROLLOVER

If you are 70 ½ or older, the Charitable IRA Rollover provides a unique opportunity to use retirement plan assets to make a meaningful gift to a qualified nonprofit organization without receiving taxable income on the withdrawal. Contact our Director of Planned Giving, John Rodenhausen, at john@cfaac.org or call 410.280.1102, ext. 103.

LEAVE A LEGACY

Partnering with CFAAC will ensure the causes that matter to you will be supported for future generations. There are many ways to make a planned gift to CFAAC: Bequests, Charitable Remainder Trusts, Charitable Lead Trusts, Life Insurance, Retirement Plans, and more. Contact our Director of Planned Giving, John Rodenhause, at john@cfaac.org or call 410.280.1102, ext. 103.

ENDOW MARYLAND

A Maryland state tax credit called “Endow Maryland” rewards donors who help build permanent charitable funds for local communities across the state and in Anne Arundel County. Endow Maryland allows donors to establish or add to an existing endowed fund at CFAAC and qualify for a 25% state tax credit. CFAAC has a limited number of tax credits available, so donate today. Contact our Director of Finance and Operations, Kathy Luthcke, at kathy@cfaac.org or call 410.280.1102 ext. 105.

CHARITABLE PARTNERS PROGRAM

CFAAC recognizes that the pooling of invested assets reduces administrative and investment-related expenses, allowing more money to go toward benefiting the social sector. A donor may wish to recommend that their contributed assets be invested outside of our pooled investments. For this reason, we have established certain guidelines, called the Charitable Partners Program (formerly the Medallion Program), for when a donor wishes to recommend a specific investment manager or management firm to manage their donated assets. Contact our Director of Finance and Operations, Kathy Luthcke, at kathy@cfaac.org or call 410.280.1102 ext. 105 for more information.

OPEN A FUND

Opening a fund at CFAAC is like having your own private foundation, only without the hassle and expense. CFAAC staff researches each nonprofit you'd like to support to ensure it is in good standing and then issues the check from your fund. For more information on opening a fund contact our Director of Development, Damika Baker-Wilson, at damika@cfaac.org or 410.280.1102 ext. 102.





ABOUT CFAAC

At CFAAC we know that every ONE of us makes a difference. That is why we are focused on growing philanthropy one person, one family, one business at a time. The more of us who give, the more good we can do for our community, together.

OUR VISION

We envision a vibrant and generous community that comes together to enhance the quality of life for all.

OUR MISSION

Our mission is to inspire and promote giving in Anne Arundel County by connecting people who care with causes that matter.

OUR ROLE

CFAAC's role is to promote philanthropy, help to identify critical needs in Anne Arundel County, partner with donors to help them meet their philanthropic and financial goals, and promote collaboration to help strengthen local nonprofits.

Community Foundation of Anne Arundel County

900 Bestgate Road, Suite 400

Annapolis, MD 21401

410.280.1102 | www.cfaac.org